

**TECHNICAL MANUAL**

**ORGANIZATIONAL, DIRECT SUPPORT, AND GENERAL SUPPORT,  
MAINTENANCE REPAIR PARTS AND SPECIAL TOOLS LISTS**

**COMPRESSOR, RECIPROCATING: AIR  
HAND TRUCK MOUNTED, GASOLINE  
ENGINE DRIVEN, 5 CFM, '175 PSI  
(KELLOGG AMERICAN MODEL G-311-PC)  
NSN 4310-00-843-8885**

This copy is a reprint which includes current  
pages from Changes 1 through 4

---

**HEADQUARTERS, DEPARTMENT OF THE ARMY**

**26 JULY 1979**



CHANGE }  
NO. 4 }

HEADQUARTERS  
DEPARTMENT OF THE ARMY  
WASHINGTON, D. C., 21 February 1989

Organizational , Direct Support and General Support Maintenance  
Repair Parts and Special Tools List

COMPRESSOR, RECIPROCATING: AIR HAND TRUCK MOUNTED,  
GASOLINE ENGINE DRIVEN, 5 CFM, 175 PSI  
(KELLOGG AMERICAN MODEL G-311-PC)  
NSN 4310-00-843-8885

TM 5-4310-276-24P, 26 July 1979, is changed as follows:

1. Remove and insert pages as indicated below. New or changed text material is indicated by a vertical bar in the margin. An illustration change is indicated by a miniature pointing hand.

Remove pages

Insert pages

25 and 26  
35/36

25 and 26  
35/36

2. Retain this sheet in front of manual for reference purposes.

**By Order of the Secretary of the Army:**

**CARL E. VUONO**  
*General, United States Army*  
*Chief of Staff*

**Official:**

**WILLIAM J. MEEHAM, II**  
*Brigadier General, United States Army*  
*The Adjutant General*

**DISTRIBUTION:**

To be distributed in accordance with DA Form 12-25A, Unit, Direct and General Support Maintenance requirements for Compressor, Reciprocating, Air, Gas Engine, Hand Truck Mounted, 5 CFM, 175 PSI (G-311-PC).



CHANGE }  
No. 3 }

HEADQUARTERS  
DEPARTMENT OF THE ARMY  
WASHINGTON, D. C., 8 April 1988

Organizational , Direct Support and General Support Maintenance  
Repair Parts and Special Tools List

COMPRESSOR, RECI PROCATING: AIR HAND TRUCK MOUNTED,  
GASOLINE ENGINE DRIVEN, 5 CFM, 175 PSI  
(KELLOGG AMERICAN MODEL G-311-PC)  
NSN 4310-00-843-8885

TM 5-4310-276-24P, 26 July 1979, is changed as follows:

1. Remove and insert pages as indicated below. New or changed text material is indicated by a vertical bar in the margin. An illustration change is indicated by a miniature pointing hand.

Remove pages

Insert pages

i/ii

i/ii

7 through 10

7 through 10

17 and 18

17 and 18

23 through 26

23 through 26

33 and 34

33 and 34

35/36

35/36

2. Retain this sheet in front of manual for reference purposes.

**By Order of the Secretary of the Army:**

**CARL E. VUONO**  
*General, United States Army*  
*Chief of Staff*

**Official:**

**R. L. DILWORTH**  
*Brigadier General, United States Army*  
*The Adjutant General*

DISTRIBUTION:

To be distributed in accordance with DA Form 12-25A, Unit, Direct and General Support Maintenance requirements for Compressor, Reciprocating, Air, Gas Engine, Hand Truck Mounted, 5 CFM, 175 PSI (G-311-PC).



CHANGE }  
NO. 2 }

HEADQUARTERS  
DEPARTMENT OF THE ARMY  
WASHINGTON, D. C., 14 July 1987

Organizational, Direct Support, and General Support,  
Maintenance Repair Parts and Special Tools Lists  
COMPRESSOR, RECI PROCATING: AIR  
HAND TRUCK MOUNTED, GASOLINE  
ENGINE DRIVEN, 5 CFM, 175 PSI  
(KELLOGG AMERICAN MODEL G-311-PC)  
NSN 4310-00-843-8885

TM 5-4310-276-24P, 26 July 1979, is changed as follows:

1. Remove and insert pages as indicated below. New or changed text material is indicated by a vertical bar in the margin. An illustration change is indicated by a miniature pointing hand.

Remove pages

7 through 12  
15 through 20  
23 through 26  
29 and 30  
33 through 35

Insert pages

7 through 12  
15 through **20**  
23 through 26  
29 and 30  
33 through 35/36

2. Retain this sheet in front of manual for reference purposes.

**By Order of the Secretary of the Army:**

**Official:**

**R. L. DILWORTH**  
**Brigadier General, United States Army**  
**The Adjutant General**

CARL E. VUONO  
**General, United States Army**  
**Chief of Staff**

DISTRIBUTION:

To be distributed in accordance with DA Form 12-25A, Unit, Direct and General Support Maintenance requirements for Compressor, Reciprocating, Air, Gas Engine, Hand Truck Mounted, 5 CFM, 175 PSI (G-311-PC)





CHANGE }  
 No. 1 }

HEADQUARTERS  
 DEPARTMENT OF THE ARMY  
 WASHINGTON, D. C., 2 January 1984

**ORGANIZATIONAL, DIRECT SUPPORT AND GENERAL  
 SUPPORT MAINTENANCE REPAIR PARTS AND SPECIAL TOOLS LIST**

**COMPRESSOR, RECIPROCATING: AIR: HAND TRUCK  
 MOUNTED, GASOLINE ENGINE DRIVEN, 5 CFM, 175 PSI,  
 (KELLOGG AMERICAN MODEL G-311-PC)  
 NSN 4310-00-843-8885**

TM 5-4310-276-24P 26 July 1979, is changed as follows:

**1. Remove and insert pages as indicated below:**

<b>Remove pages</b>	<b>Insert pages</b>
7 thru 12	7 thru 12
15 thru 26	15 thru 26
29 thru 37	29 thru 35

**2. New or changed text material is indicated by a vertical bar in the margin. An illustration change is indicated by a miniature pointing hand.**

**3. Retain this sheet in front of manual for reference purposes.**

By Order of the Secretary of the Army:

**JOHN A. WICKHAM, JR.**  
*General, United States Army*  
*Chief of Staff*

Official:

**ROBERT M. JOYCE**  
*Major General, United States Army*  
*The Adjutant General*

**DISTRIBUTION:**

To be distributed in accordance with DA Form 12-25A, Organizational Maintenance requirements for Air Compressors, 5 CFM.



TECHNICAL MANUAL }  
 No. 5-431 0-276-24P }

HEADQUARTERS  
 DEPARTMENT OF THE ARMY  
 WASHINGTON, DC., 26 July 1979

**ORGANIZATIONAL, DIRECT SUPPORT, AND GENERAL  
 SUPPORT MAINTENANCE REPAIR PARTS AND SPECIAL TOOLS LIST**

**COMPRESSOR, RECIPROCATING: AIR: HAND TRUCK  
 MOUNTED, GASOLINE ENGINE DRIVEN, 5 CFM, 175 PSI,  
 (KELLOGG AMERICAN MODEL G-311-PC)  
 NSN 4310-00-843-8885**

Current as of 2 March 1979

REPORTING ERRORS AND RECOMMENDING IMPROVEMENTS

You can help improve this manual. If you find any mistake or if you know of a way to improve the procedures, please let us know. Mail your letter, DA Form 2028 (Recommended Changes to Publications and Blank Forms), or DA Form 2028-2 located in the back of this manual direct to: Commander, U.S. Army Troop Support Command, ATTN: AMSTR-MCTS, 4300 Goodfellow Boulevard, St. Louis, MO 63120-1798. A reply will be furnished directly to you.

**Table of Contents**

	Listing Page	Illus Figure
SECTION I. INTRODUCTION		
II. REPAIR PARTS LIST		
Group 01 Engine		
Engine Assembly and Crankshaft pulley .....	6	1
03. Fuel System		
Tanks, Lines and Fittings .....	8	2
Fuel Strainer Assembly .....	10	3
10. Front Axle		
Front Axle Assembly. ....	12	4
13. Wheels and Tracks		
Wheel Assembly, Tires and Tubes.....	14	5
15. Frame		
Handtruck Assembly... . . . .	16	6
22. Body Chassis or Hull and Accessory Items		
Body Chassis or Hull, Accessory Items and Data Plates .....	18	7
47. Gages		
Gages, Mountings, Lines and Fittings .....	20	8
50. Pneumatic Equipment		
Crankcase, Crankshaft, Bearings, End Plate, Pulley and Deal . . . . .	22	9
Cylinder, Cylinder Head Tubing and Corrections.....	24	10
Piston and Rod .....	26	11
Air Intake Filter Assembly. ....	28	12
Cylinder Head, Intake and Discharge Valves,.....	30	13
Air Receiver Tank Assembly Relief and Safety Valves.. . . . .	32	14
SECTION III. SPECIAL TOOLS LIST (Not Applicable)	34	
SECTION IV. NATIONAL STOCK NUMBER AND REFERENCE NUMBER INDEX		

\*This manual supersedes TM 5-4310-276-25P, 2 December 1968, including all changes.



## Section I. INTRODUCTION

### 1. Scope.

This manual lists repair parts, special tools, test, measurement, and diagnostic equipment (TMDE), and other support equipment required for operation and performance of organization, direct support, and general support of the Compressor, Reciprocating: Air: Handtruck Mounted.

### 2. General.

**a. Section II - Repair Parts List.** A list of repair parts authorized for use in the performance of maintenance, The list also includes parts which must be removed for replacement of the authorized parts. Parts lists are composed of functional groups in ascending numerical sequence, with the parts in each group listed in figure and item number sequence. Bulk materials are listed in NSN sequence, as the last group in Section II.

**b. Section III - Special Tools List.** Not applicable.

**c. Section IV - National Stock Number and Part Number Index.** A list, in National item identification number (NIIN) sequence, of all National Stock Numbers (NSN) appearing in the listings, followed by a list, in alphanumeric sequence, of all part numbers appearing in the listings. National Stock Number and part numbers are cross-referenced to each illustration figure and item number appearance.

### 3. Explanation of Columns.

The following provides an explanation of columns found in the tabular listings:

**a. Illustration.** This column is divided as follows:

**(1) Figure Number.** Indicates the figure number of the illustration in which the item is shown.

**(2) Item Number.** The number used to identify each item called out in the illustration.

**b. Source, Maintenance, and Recoverability Codes (SMR).**

**(1) Source Code.** Source codes are assigned to support items to indicate the manner of acquiring support items for maintenance, repair, or overhaul of end items. Source codes are entered in the first and second positions of the Uniform SMR Code format as follows:

<b>Code</b>	<b>Definition</b>
PA	Item procured and stocked for anticipated or known usage.
PB	Item procured and stocked for insurance purpose because essentiality dictates that a minimum quantity be available in the supply systems.
PC	Item procured and stocked and which otherwise would be coded PA except that it is deteriorative in nature.
PD	Support item, excluding support equipment, procured for initial issue or outfitting and stocked only for subsequent or additional initial issues or outfittings., Not subject to automatic replenishment.
PE	Support equipment procured and stocked for initial issue or outfitting to specified maintenance repair activities.
PF	Support equipment which will not be stocked but which will be centrally procured on demand.
PG	Item procured and stocked to provide for sustained support for the life of the equipment. It is applied to an item peculiar to the equipment which, because of probable discontinuance or shutdown of production facilities, would prove uneconomical to reproduce at a later time.
KD	An item of a depot overhaul/repair kit and not purchased separately. Depot kit defined as a kit that provides items required at the time of overhaul or repair.
KF	An item of a maintenance kit and not purchased separately. Maintenance kit defined as a kit that provides an item that can be replaced at organizational or intermediate levels of maintenance.
KB	Item included in both a depot overhaul/repair kit and a maintenance kit.
MO	Item to be manufactured or fabricated at organizational level.
MF	Item to be manufactured or fabricated at the direct support maintenance level.
MB	Item to be manufactured or fabricated at the general support maintenance level.
MD	Item to be manufactured or fabricated at the depot maintenance level,

<b>Code</b>	<b>Definition</b>
AO	Item to be assembled at organizational level.
AF	Item to be assembled at direct support maintenance level.
AH	Item to be assembled at general support maintenance level.
AD	Item to be assembled at depot maintenance level.
XA	Item is not procured or stocked because the requirements for the item will result in the replacement of the next higher assembly.
XB	Item is not procured or stocked. If not available through salvage, requisition.
XD	A support item that is not stocked. When required, item will be procured through normal supply channels.

**NOTE**

***Cannibalization or salvage may be used as a source of supply for any items source coded a hove except those coded XA or XD.***

**(2) Maintenance Code.** Maintenance codes are assigned to indicate the levels of maintenance authorized to use and repair support items. The maintenance codes are entered in the third and fourth positions of the Uniform SMR Code format as follows:

**(a)** The maintenance code entered in the third position will indicate the lowest maintenance level authorized to remove replace, and use the support item. The maintenance code entered in the third position will indicate one of the following levels of maintenance.

<b>Code</b>	<b>Application/Explanation</b>
C	Crew or operator maintenance performed within organizational maintenance.
O	Support item is removed, replaced, used at the organizational level.
I	Support item is removed, replaced used by the direct support element of integrated direct support maintenance.
F	Support item is removed, replaced, used at the direct support level.
H	Support item is removed, replaced, used at the general support level.
D	Support items that are removed, replaced, used at depot, mobile depot, spe-

<b>Code</b>	<b>Definition</b>
	cialized repair activity only,

**NOTE**

***Codes "I" and "F" will be considered the same by direct support units.***

**(b)** The maintenance code entered in the fourth position indicates whether the item is to be repaired and identifies the lowest maintenance level with the capability to perform complete repair (i.e., all authorized maintenance functions). This position will contain one of the following maintenance codes:

<b>Code</b>	<b>Application/Explanation</b>
O	The lowest maintenance level capable of complete repair of the support item is the organizational level.
F	The lowest maintenance level capable of complete repair of the support item is the direct support level.
H	The lowest maintenance level capable of complete repair of the support item is the general support level.
D	The lowest maintenance level capable of complete repair of the support item is the depot level.
L	Repair restricted to designated specialized repair activity.
Z	Nonreparable. No repair is authorized.
B	No repair is authorized. The item may be reconditioned by adjusting, lubricating, etc., at the user level. No parts or special tools are procured for the maintenance of this item.

**(3) Recoverability Code.** Recoverability codes are assigned to support items to indicate the disposition action on unserviceable items. The recoverability code is entered in the fifth position of the Uniform SMR Code format as follows:

<b>Recoverability Codes</b>	<b>Definition</b>
Z	Nonreparable item. When unserviceable, condemn and dispose at the level indicated in Position 3.
O	Reparable item, When uneconomically reparable, condemn and dispose at organizational level.
F	Reparable item. When un-

**Recoverability Codes**

**Definition**

	economically repairable, condemn and dispose at the direct support level.
H	Reparable item. When uneconomically repairable, condemn and dispose at the general support level.
D	Reparable item. When beyond lower level repair capability, return to depot. Condemnation and disposal not authorized below depot level.
L	Reparable item. Repair, condemnation, and disposal not authorized below depot/specialized repair activity level.
A	Item requires special handling or condemnation procedures because of specific reasons (i.e., precious metal content, high dollar value, critical material or hazardous material). Refer to appropriate manuals/directives for specific instructions.

**c. National Stock Number.** Indicates the National Stock Number assigned to the item and will be used for requisitioning purposes.

**d. Part Number.** Indicates the primary number used by the manufacturer which controls the design and characteristics of the item by means of its engineering drawings, specifications standards, and inspection requirements to identify an item or range of items.

**NOTE**

**When a stock numbered item is requisitioned, the repair part received may have a different part number than the part being replaced.**

**e. Federal Supply Code for Manufacturer (FSCM).** The FSCM is a 5-digit numeric code listed in SB 708-42 which is used to identify the manufacturer, distributor, or Government agency, etc.

**f. Description.** Indicates the Federal item name and, if required, a minimum description to identify the item. Items that are included in kits and sets are listed below the name of the kit or set with the quantity of each item in the kit or set indicated in the quantity incorporated in unit column.

When the part to be used differs between serial numbers of the same model, the effective serial numbers are shown as the last line of the description. In the Special Tools List, the initial basis of issue (BOI) appears as the last line in the entry for each special tool, TMDE, and support equipment. When density of equipments supported exceeds density spread indicated in the basis of issue, the total authorization is increased accordingly,

**g. Unit of Measure (U/M).** Indicates the standard of the basic quantity of the listed items as used in performing the actual maintenance function. This measure is expressed by a two-character alphabetical abbreviation (e.g., ea, in, pr, etc.). When the unit of measure differs from the unit of issue, the lowest unit of issue that will satisfy the required units of measure will be requisitioned.

**h. Quantity incorporated in Unit.** Indicates the quantity of the item used in the breakout shown on the illustration figure, which is prepared for a functional group, subfunctional group, or an assembly. A "V" appearing in this column in lieu of a quantity indicates that no specific quantity is applicable, (e. g., shims, spacers, etc. ) .

**4. Special Information.**

**a.** Repair parts kits and gasket sets appear as the last entries in the repair parts listing for the figure in which its parts are listed as repair parts or are listed at the end of the repair parts listing for the last figure containing parts of the kit.

**b.** The following publications pertain to Compressor, Reciprocating, and its components.

TM 5-2805-256-14	Operator, Direct Support, General Support Maintenance Manual
TM 5-4310-276-15	Operator, Organizational, Direct Support, General Support and Depot Maintenance Manual
LO 5-4310-276-12	Lubrication Order

**5. How to Locate Repair Parts.**

**a. When National Stock Number or Part Number is Unknown:**

(1) **First.** Using the table of contents, determine the functional group within which the repair part belongs. This is necessary since illustrations are prepared for functional groups, and listings are divided into the same groups.

(2) **Second.** Find the illustration covering

the functional group to which the repair part belongs.

(3) **Third.** Identify the repair part on the illustration and note the illustration figure and item number of the repair part.

(4) **Fourth.** Using the Repair Parts Listing, find the figure and item number noted on the illustration.

**b. When National Stock Number or Part Number is Known.**

(1) **First.** Using the Index of National Stock Numbers and Part Numbers, find the pertinent National stock number or part number. This index is in ascending NSN sequence followed by a list of part numbers in ascending alphanumeric sequence, cross-referenced to the illustration figure number and item number.

(2) **Second.** After finding the figure and item number, locate the figure and item number in the repair parts list.

**6. Abbreviations.**

<b>Abbreviations</b>	<b>Explanation</b>
deg.....	degree(s)
ea.....	each
ft.....	feet (foot)
grp.....	group
id.....	inside diameter
in.....	inch(es)
lg.....	long (length)
mtg.....	mounting (s)
No.....	Number(s)
od.....	outside diameter
u/w.....	used with





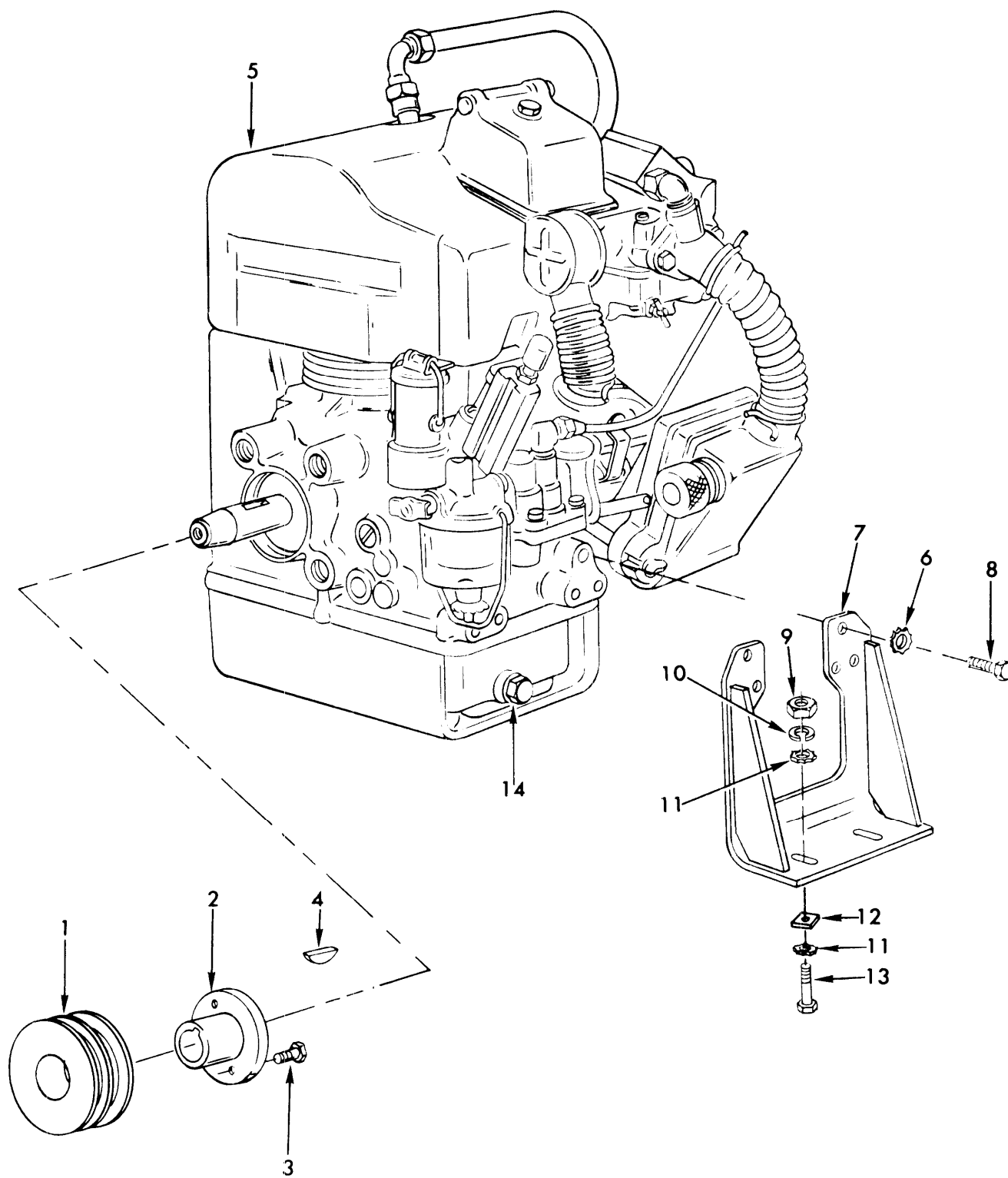
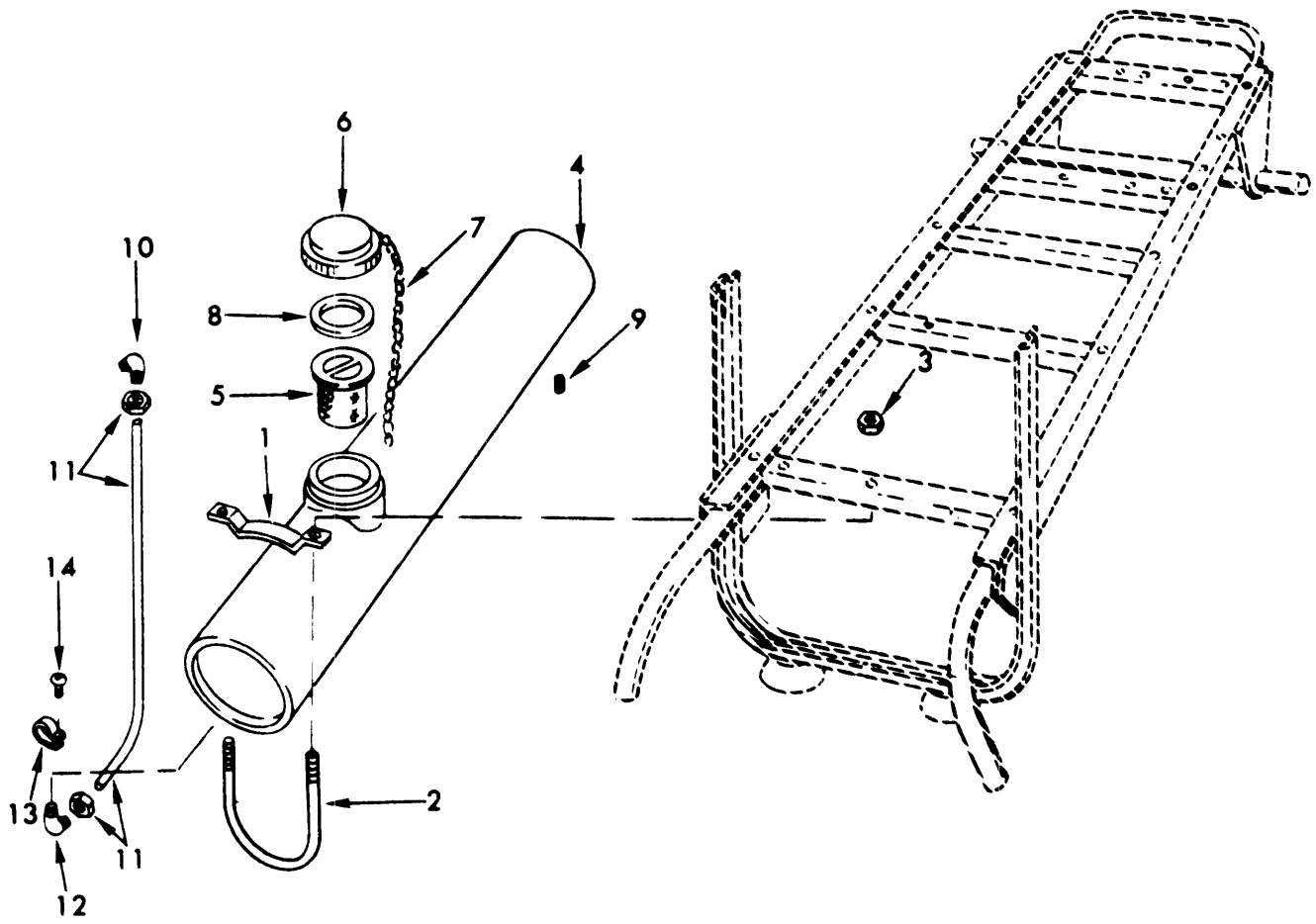


Figure 1. Engine Assembly and Crankshaft Pulley

(1) ILLUSTRATION (A) FIG NO	(2) (B) ITEM NO	(3) SMR CODE	(4) FEDERAL STOCK NUMBER	(5) PART NUMBER	(6) FSCM	(6) DESCRIPTION	(7) USABLE ON CODE	(8) QTY INC IN UNIT
GROUP 01 ENGINE								
1	1	PBOZZ	3020-01-162-5203	2AK32H	71176	PULLEY,DRIVE	EA	1
1	2	XBOZZ		H3-4	71176	BUSHING,PULLEY	EA	1
1	3	PAOZZ	5305-01-023-1902	980	53239	SCREW,CAP,HEXAGON DRIVE PULLEY MTG 1/4-20 THD SIZE 3/4 IN LG	EA	2
1	4	XBOZZ		43360	53239	KEY,WOODRUFF PULLEY BUSHING TO SHAFT	EA	1
1	5	PAFHH	2805-00-068-7510	MODELLA08-3	97403	ENGINE ASSEMBLY MILITARY STANDARD	EA	1
1	6	PAOZZ	5310-00-550-1130	MS35333-40	96906	WASHER,LOCK ENGINE MTG	EA	12
1	7	XBOZZ		48355	53239	BRACKET ENGINE	EA	1
1	8	PAOZZ	5305-00-068-0502	MS90725-6	96906	SCREW,CAP,HEXAGON ENGINE MTG	EA	12
1	9	PAOZZ	5310-01-021-4248	9152	53239	NUT,PLAIN,HEXAGON ENGINE MTG	EA	4
1	10	PAOZZ	5310-01-021-4279	1032	53239	WASHER,FLAT ENGINE MTG 3/8 IN SCREW SIZE	EA	8
1	11	PAOZZ	5310-00-953-8628	MS45904-77	96906	WASHER,LOCK ENGINE MTG BRACKET	EA	8
1	12	XBOZZ		48409	53239	SPACER ENGINE MTG	EA	4
1	13	PAOZZ	5305-00-269-3214	MS90725-64	96906	SCREW,CAP,HEXAGON	EA	1
1	14	PAOZZ	4730-00-788-0441	9786E88	97403	PLUG,MAGNETO OIL DRAIN	EA	2

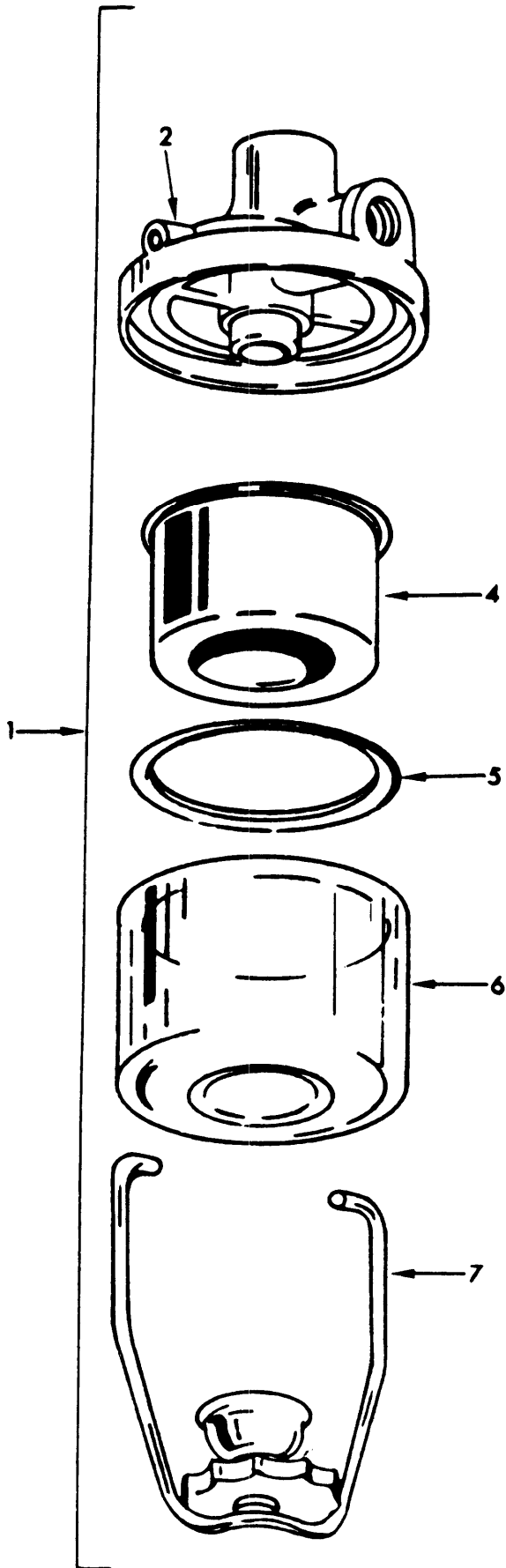


TS 4310-276-24P/2

Figure 2. Fuel System, Tank, Line's and Fittings

SECTION II

(1) ILLUSTRATION (A) FIG NO	(2) (B) ITEM NO	(3) SMR CODE	(4) FEDERAL STOCK NUMBER	(5) PART NUMBER	(6) FSCM	(6) DESCRIPTION	(7) USABLE ON CODE	(8) QTY INC IN UNIT
GROUP 03 FUEL SYSTEM								
2	1	XBOZZ		43318	53239	BRACKET,SUPPORT FUEL TANK	EA	2
2	2	XBOZZ		43319	53239	HANGER FUEL LINE	EA	2
2	3	PAOZZ	5305-00-068-0502	MS90725-6	96906	NUT,PLAIN,HEXAGON TANK MTG	EA	4
2	4	XBOZZ	2910-01-038-6050	43313	86823	TANK ASSEMBLY FUEL	EA	1
2	5	XBOZZ	2910-00-711-0395	T-17-4	86823	.STRAINER,FUEL	EA	1
2	6	PAOZZ	2910-00-705-7814	A21951	86823	.CAP,FUEL TANK	EA	1
2	7	XAOZZ		43530	86823	..CHAIN,CAP	EA	1
2	8	XDOZZ	5330-00-961-9528	43531	53239	..GASKET	EA	1
2	9	PAOZZ	4730-00-288-8572	9348	53239	PLUG,PIPE FUEL TANK DRAIN	EA	1
2	10	PAOZZ	4730-00-287-1766	MS39171-13	96906	ELBOW,TUBE FUEL LINE	EA	1
2	11	MOOZZ		48529	53239	FUEL LINE 32" LONG, MANUFACTURE FROM COPPER TUBE, NSN 4710-00-277-5525	EA	1
2		PAOZZ	4710-00-277-5525	ASTMB75	81346	.TUBE, COPPER, 1/4" O.D., .030 THK		
2	12	PAOZZ	4730-00-287-1766	MS39171-13	96906	ELBOW, TUBE FUEL LINE	EA	1
2	13	XBOZZ		CP30-1-11-13A	25500	CLAMP,FUEL LINE	EA	1
2	14	PAOZZ	5305-00-042-4506	2210-10322-08-1	46522	SCREW MACHINE FUEL SCREW,MACHINE 10-32THD 1/2IN LG	EA	1

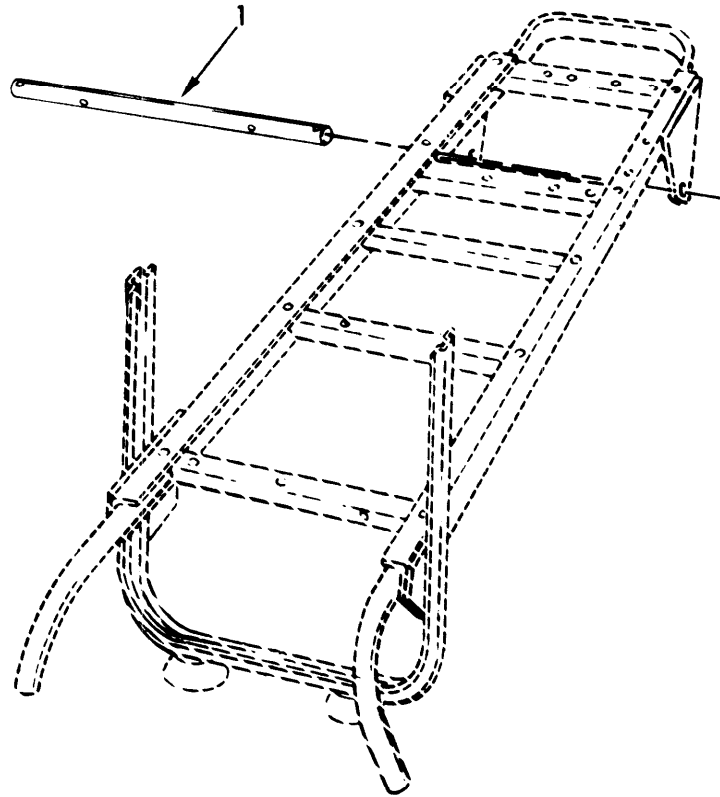


TS 4310-276-24P/3

Figure 3. Fuel Stainer Assembly

SECTION II

(1)	(2)	(3)	(4)	(5)	(6)	(7)	(8)	
ILLUSTRATION								
(A)	(B)	FEDERAL			DESCRIPTION		QTY	
FIG	ITEM	SMR	STOCK	PART			INC	
NO	NO	CODE	NUMBER	NUMBER	FSCM	USABLE ON CODE	U/M	
							IN	
							UNIT	
3	1	PBOZZ	2910-00-905-9792	MS51086-1	96906		EA	1
3	2	XAOZZ	2910-00-099-5639	LP43	66289		EA	1
3	4	XAOZZ		854187	80463		EA	1
3	5	PAOZZ	5330-00-087-3612	MS51091-4	90696		EA	1
3	6	XAOZZ	2910-00-025-6407	1522092	70040		EA	1
3	7	XAOZZ		854254	70040		EA	1



TS 4310-276-24P/4

Figure 4. Front Axle



SECTION II

(1)	(2)	(3)	(4)	(5)	(6)	(7)	(8)	
ILLUSTRATION							QTY	
(A)	(B)	FEDERAL			DESCRIPTION		INC	
FIG	ITEM	SMR	STOCK	PART			IN	
NO	NO	CODE	NUMBER	NUMBER	FSCM	USABLE ON CODE	U/M	UNIT

GROUP 10 FRONT AXLE

4	1	XBOZZ		323277-8	53205	AXLE,FRONT	EA	1
---	---	-------	--	----------	-------	------------	----	---

TS 4310-276-24P/5

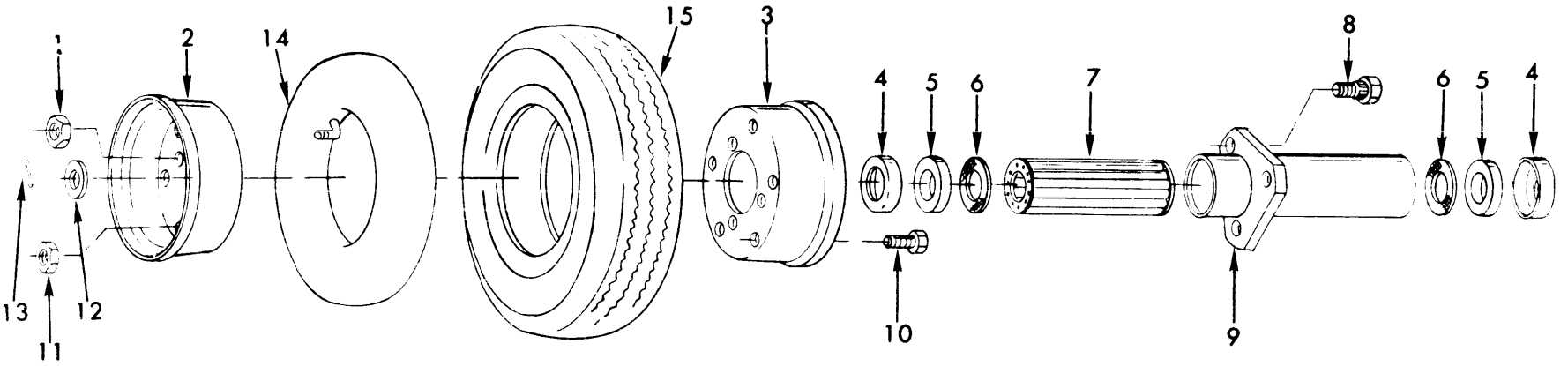


Figure 5. Wheel Assembly, Tire and Tube

(1) ILLUSTRATION (A) FIG NO	(2) (B) ITEM NO	(3) SMR CODE	(4) FEDERAL STOCK NUMBER	(5) PART NUMBER	(6) FSCM	(6) DESCRIPTION	(7) USABLE ON CODE	(8) QTY INC IN UNIT
GROUP 13 WHEEL AND TRACKS								
5		PBOZZ		A1560	11431	WHEEL ASSEMBLY HAND TRUCK	EA	1
5	1	PAOZZ	5310-00-732-0558	NW51967-8	96906	.NUT, PLAIN, HEXAGON HUB MTG SCREW	EA	3
5	2	XBOZZ		6461	11431	.DISC,WHEEL OUTER	EA	1
5	3	XBOZZ		6460	11431	.DISC,WHEEL INNER	EA	1
5	4	PBOZZ		4201	11431	.CAP,END WHEEL BEARING	EA	2
5	5	XBOZZ		919	11431	.SEAL,WHEEL BEARING	EA	2
5	6	XBOZZ		919	11431	.SEAL,WHEEL BEARING	EA	2
5	7	XBOZZ	3120-00-423-0356	559	11431	.BEARING TRUCK WHEEL	EA	1
5	8	PAOZZ	5306-01-023-1856	306	11431	.BOLT,MACHINE HJB 3/8-24 THD SIZE 3/4 IN LG	EA	3
5	9	XBOZZ		841	11431	.TUBE, WHEEL FLANGE	EA	1
5	10	PAOZZ	5305-01-024-8459	954	11431	.SCREW,CAP,HEXAGON HEAD INNER TO OUTER WHEEL DISC	EA	5
5	11	PAOZZ	5310-01-021-4249	955	11431	.NUT, PLAIN, HEXAGON HUB MTG SCREW	EA	5
5	12	XBOZZ		4219	11431	.FLANGE,DISC	EA	1
5	13	PAOZZ	5315-00-013-7185	137185	00000	.PIN COTTFR 1/8	EA	2
5	14	XBOZZ	2610-00-051-9114	MS35392-48	96906	.TUBE, INNER HAND TRUCK TIRE	EA	1
5	15	XBOZF	2610-00-050-9560	MS35389-1	96906	.TIRE, RAND TRUCK	EA	1

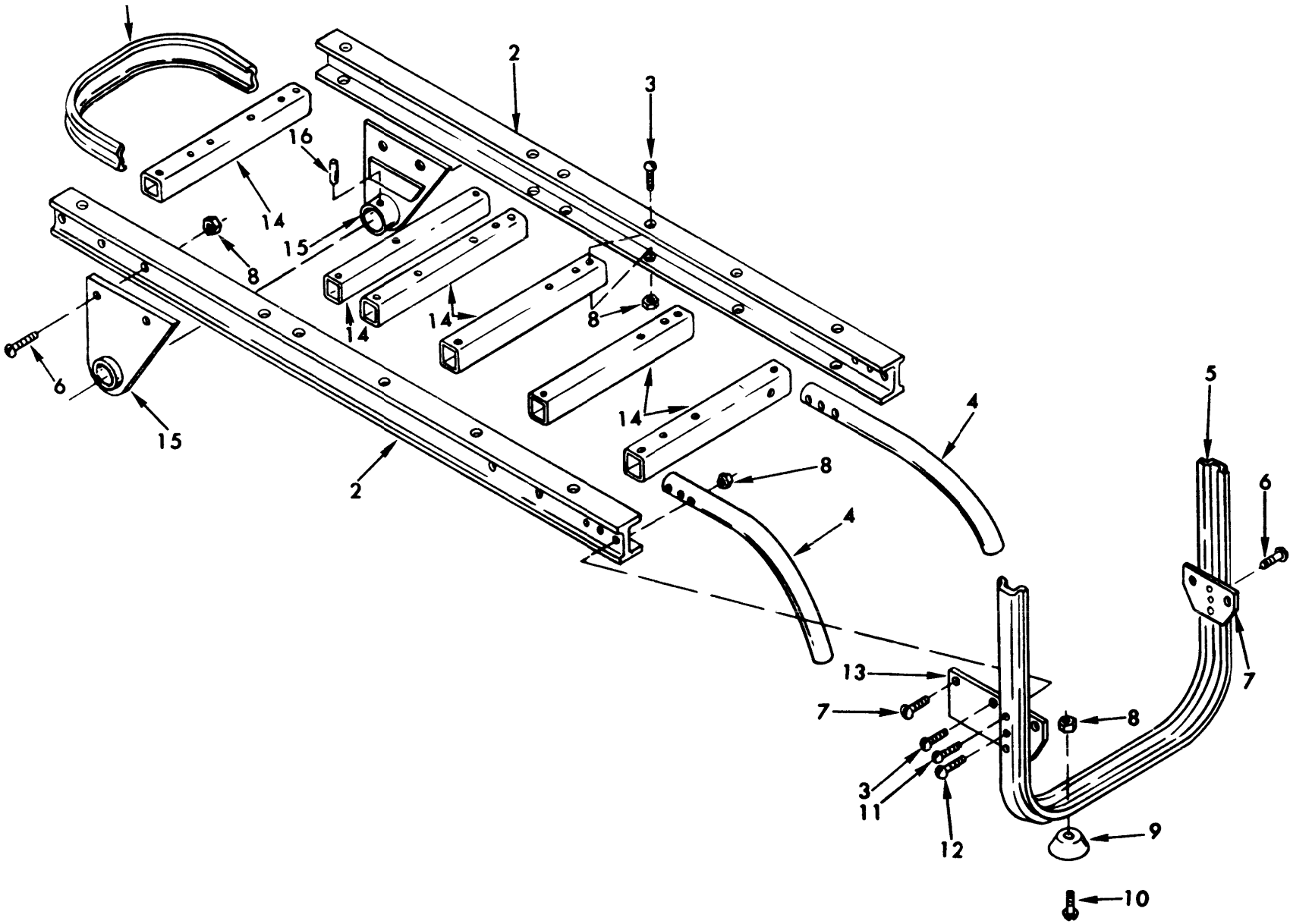
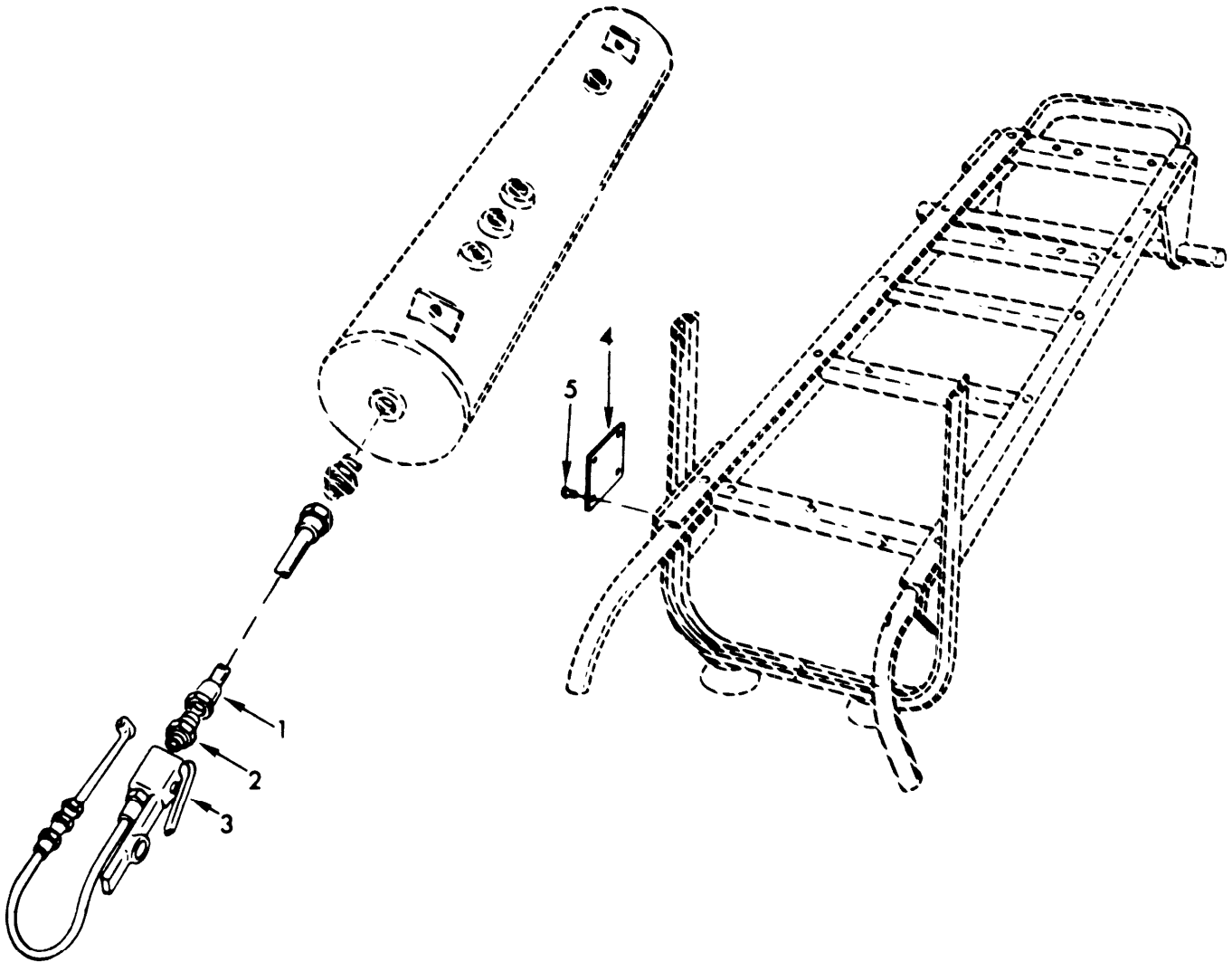


Figure 6. Handtruck Assembly

Figure 6. Handtruck Assembly

TS 4310-276-24P/6

(1) ILLUSTRATION (A) FIG NO	(2) (B) ITEM NO	(3) FEDERAL STOCK NUMBER	(4) PART NUMBER	(5) FSCM	(6) DESCRIPTION	(7) USABLE ON CODE	(8) QTY INC IN UNIT
GROUP 15 FRAME							
6		XBOZZ	323277	83205	TRUCK ASSEMBLY HAND	EA	1
6	1	XBOZZ	323277-3	83205	.BUMPER,FRONT HAND TRUCK	EA	1
6	2	XBOZZ	323277-1	83205	.RAIL,TRUCK FRAME	EA	2
6	3	XBOZZ	323277-13	00000	.SCREW,MACHINE CROSS MEMBER MTG 1/4-20 THD SIZE 1 3/4 IN LG	EA	12
6	6	PAOZZ 5305-01-022-0039	323277-22	83205	.SCREW,MACHINE FRAME TO HANDLE	EA	1
6	4	XBOZZ	323277-4	83205	.HANDLE, HAND TRUCK	EA	2
6	5	XBOZZ	323277-2	83205	.LEG HAND TRUCK SUPPORT	EA	1
6	6	XBOZZ 5305-01-023-1883	323277-14	83205	.SCREW, MACHINE GUSSET TO LEG AND NOSE MTG	EA	10
6	7	XBOZZ	323277-9	83205	.GUSSET RIGHT SIDE LEG TO FRAME	EA	1
6	8	PAOZZ 5310-00-761-6882	323277-16	83205	.NUT,PLAIN,HEXAGON NOSE MTG	EA	31
6	9	PBOZZ	322013-19	83205	.FOOT,RUBBER HAND TRUCK LEG	EA	2
6	10	PAOZZ 5305-01-023-1882	323277-21	83205	.SCREW,MACHINE GUSSET TO FRAME	EA	3
6	11	PAOZZ 5305-01-023-1882	323277-21	83205	.SCREW,MACHINE GUSSET TO FRAME	EA	3
6	12	PAOZZ 5305-01-022-0037	323277-20	83205	.SCREW,MACHINE GUSSET TO FRAME	EA	2
6	13	XBOZZ	323277-8	83205	.GUSSET LEFT SIDE LEG TO FRAME	EA	1
6	14	XBOZZ	323277-11	83205	.MEMBER,CROSS TRUCK SUPPORT	EA	6
6	15	XBOZZ	323277-6	83205	.NOSE RIGHT FRONT AXLE SUPPORT	EA	1
6	15	XBOZZ	323277-6	83205	.NOSE, LEFT FRONT AXLE SUPPORT	EA	1
6	16	XBOZZ	323277-19	00000	.PIN,ROLL	EA	2

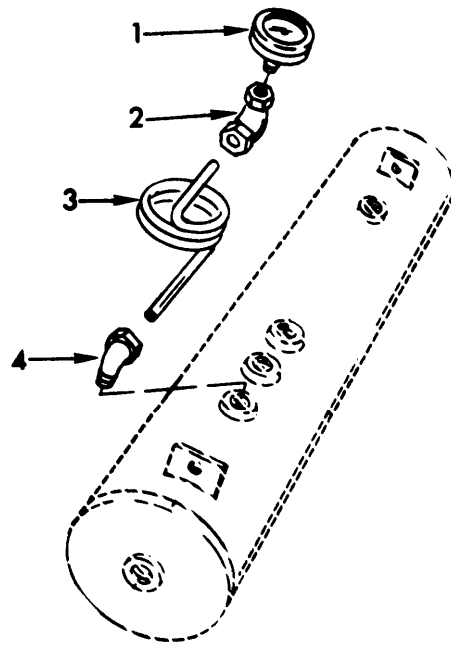


TS 4310-276-24P/7

Figure 7. Body Chassis or Hull, Accessory Items and Data Plates

SECTION II

(1)	(2)	(3)	(4)	(5)	(6)	(7)	(8)	
ILLUSTRATION								
(A)	(B)	FEDERAL			DESCRIPTION		QTY	
FIG	ITEM	SMR	STOCK	PART			INC	
NO	NO	CODE	NUMBER	NUMBER	FSCM	USABLE ON CODE	U/M	UNIT
GROUP 22 BODY CHASSIS OR FULL AND								
ACCESSORY ITEMS								
7	1	PAOZ	4720-00-289-4612	43320	53239	HOSE ASSEMBLY,AIR	EA	1
7	2	PAOZZ	4730-00-580-7408	48X6X8	53239	ADAPTER,HOSE HOSE TO GAGE ALSO 1/4 X 1 1/8-18 NUT COUPLER	EA	1
7	3	PAOZZ	4910-00-204-2644	6172-1506	94894	GAGE,INFLATOR	EA	1
7	4	XBOZZ		48472	53239	PLATE,INSTRUCTION	EA	1
7		PZOZZ		11713	53239	PLATE	EA	1
7	5	PAOZZ	5305-01-022-5555	15781	53239	SCREW,DRIVE INSTRUCTION PLATE MTG	EA	4
7		PAOZZ	5305-01-022-7980	9327	53239	SCREW,DRIVE IDENTIFICATION PLATE MTG	EA	2



TS 4310-276-24P/8

Figure 8. Gages, Mountings, Line's and Fittings



SECTION II

(1)	(2)	(3)	(4)	(5)	(6)	(7)	(8)	
ILLUSTRATION							QTY	
(A)	(B)	FEDERAL			DESCRIPTION		INC	
FIG	ITEM	SMR	STOCK	PART			IN	
NO	NO	CODE	NUMBER	NUMBER	FSCM	USABLE ON CODE	U/M	UNIT
GROUP 47 GAGES								
8	1	PAOZZ	6685-00-960-2783	1000-2	90677	GAGE PRESSURE	EA	1
8	2	XBOZZ	4730-00-489-8225	270X4X4	72216	FITTING GAGE MTG	EA	1
8	3	XBOZZ	4710-00-307-7975	48475	53239	TUBE AIR TANK TO GAGE	EA	1
8	4	XBOZZ	4730-00-277-7621	269X4X4	72216	FITTING, ELBOW GAGE TUBE TO TANK	EA	1

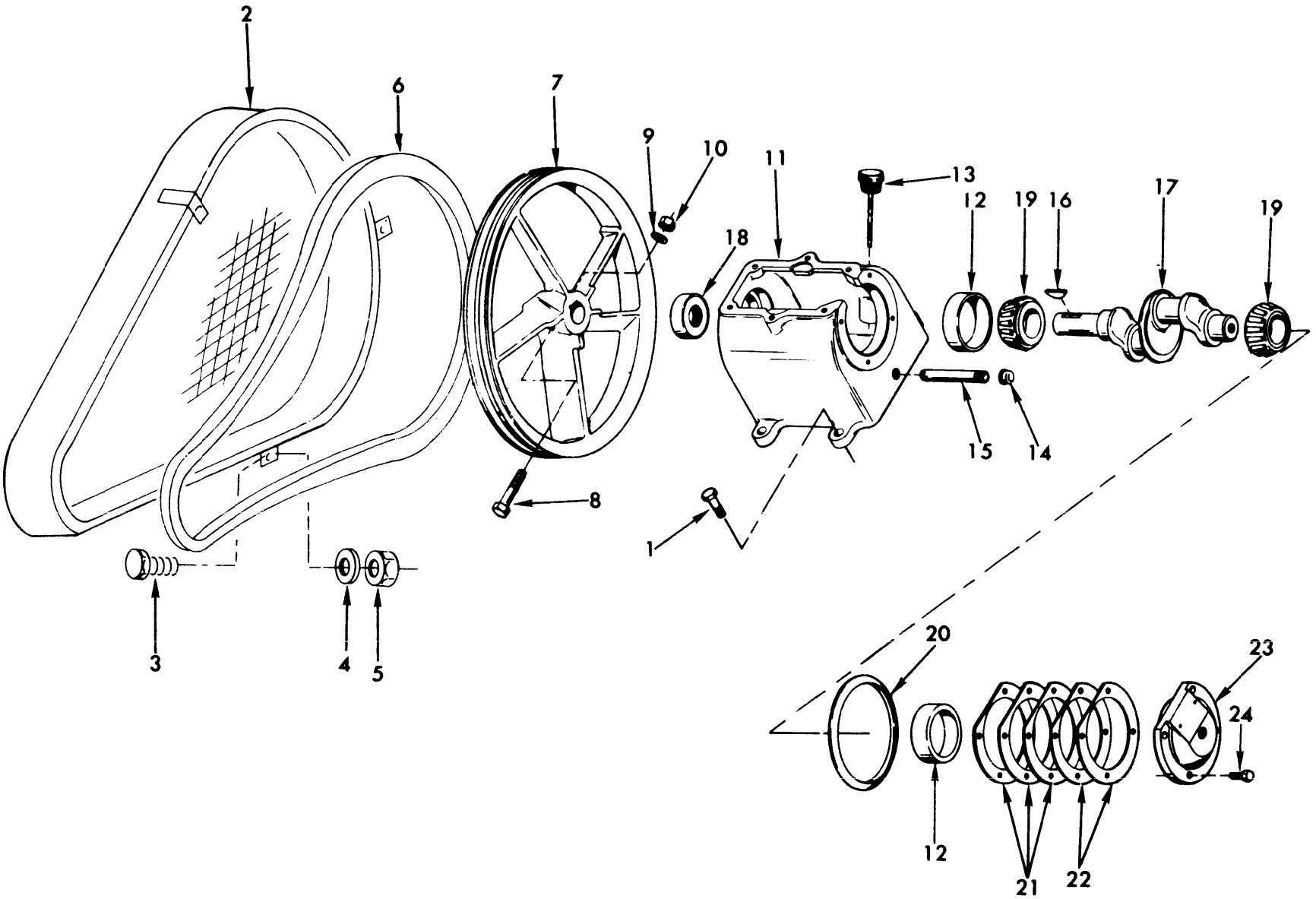
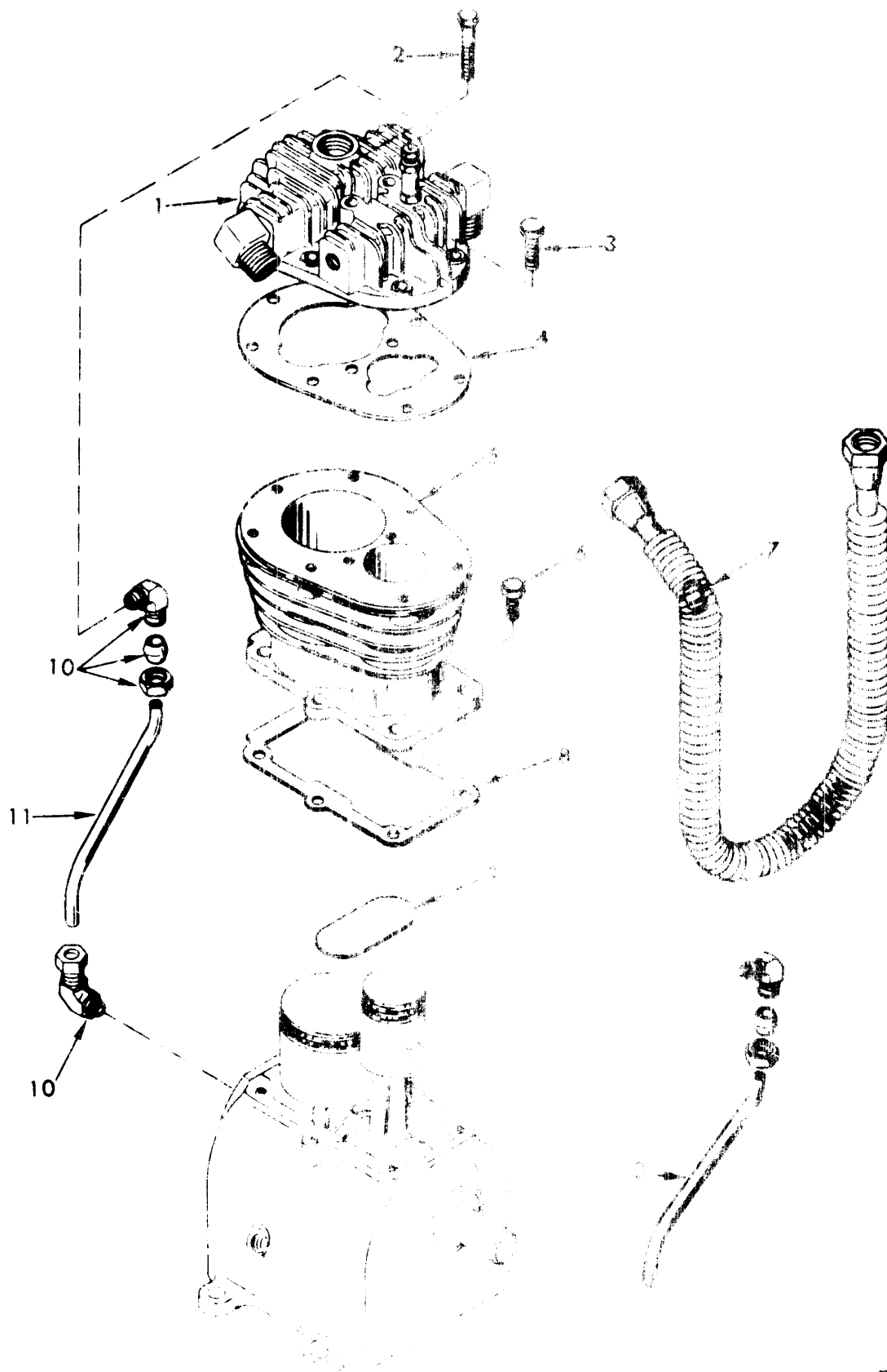


Figure 9. Crankshaft, bearings, End Plate, Pulley and Belt

Figure 9. Crankcase, Crankshaft, Bearings, End Plate, Pulley and Belt

TS 4310-276-24P/9

(1) ILLUSTRATION (A) FIG NO	(2) (B) ITEM NO	(3) SMR CODE	(4) FEDERAL STOCK NUMBER	(5) PART NUMBER	(6) FSCM	(7) DESCRIPTION  USABLE ON CODE	(8) QTY INC IN UNIT
GROUP 50 PNEUMATIC EQUIPMENT							
9	1	XBOZZ	5305-01-023-1902	980	53239	SCREW,CAP,HEXAGON COMPRESSOR MTG	EA 4
9	2	PBOZZ	3020-01-169-5313	48477	53239	GUARD, BELT	EA 1
9	3	PAOZZ	5305-01-023-1902	980	53239	SCREW,CAP,HEXAGON GUARD MTG	EA 2
9	4	PAOZZ	5310-01-022-2997	9322	53239	.WASHER,LOCK GUARD MTG	EA 2
9	5	PAOZZ	5310-01-021-4246	9156	53239	NUT,PLAIN,HEXAG GUARD MTG, 1/4-20 THD SIZE	EA 2
9	6	XBOZZ	3030-00-251-3941	4L580-2	71176	BELTS, V,MATCHED	EA 1
9		PAOFH	4310-00-689-5711	48412	53237	COMPRESSOR,RECIPROCATING	EA 1
9	7	XBOZZ		43309	53239	PULLEY,PUMP	EA 1
9	8	PAOZZ	5305-00-071-1773	MS90725-120	96906	.SCREW,CAP,HEXAGON PUMP PULLEY	EA 1
9	9	PAOZZ	5310-01-022-2996	9283	53239	.WASHER,LOCK PUMP PULLEY	EA 1
9	10	PAOZZ	5310-00-768-0318	MS51967-14	96906	.NUT,PLAIN,HEXAGON PUMP PULLEY	EA 1
9	11	XBFZZ		38230	53239	CRANKCASE AND CUP	EA 2
9	12	PAFZZ	3110-00-100-0515	14274	60038	.CUP,TAPERED,ROLLER	EA 2
9	13	XBOZZ	4310-00-319-0481	13523	53239	GAGE,OIL	EA 1
9	14	XBOZZ		13517	53239	CAP,PIPE	EA 1
9	15	PAOZZ	4730-00-585-7639			NIPPLE,PIPE OIL DRAIN 1/4 IN PIPE 5 1/2 IN LG	EA 1
9	16	XBOZZ	5315-01-009-6932	9390	53239	KEY,WOODRUFF	EA 1
9	17	PAFDZ	4310-01-022-4007	35755	53239	CRANKSHAFT ASSEMBLY ENGINE	EA 1
9	18	PAFZZ	5330-00-292-1622	12687	53239	.SEAL,PLAIN ENGS	EA 1
9	19	XBFZA	3110-00-100-3139	14117A	60038	.CONE AND ROLLER	EA 2
9	20	PAFZZ	4310-00-446-8995	31762	53239	RING,WIPER	EA 1
9	21	PAFZZ	5330-00-374-9518	31765	53239	GASKET END COVER	EA 3
9	22	PAFZZ	5330-00-374-9517	31764	53239	GASKET END COVER	EA 2
9	23	XBFZZ		38227	53239	COVER,END AND CUP	EA 1
9	24	XBFZZ	5305-01-023-1901	34090	53239	SCREW,CAP,HEXAGON END COVER MTG	EA 4



75 4310-276-24P/10

Figure 10. Cylinder, Cylinder Head, Tubing and Connections

SECTION II

(1) ILLUSTRATION (A) FIG NO	(2) (B) ITEM NO	(3) SMR CODE	(4) FEDERAL STOCK NUMBER	(5) PART NUMBER	(6) FSCM	(6) DESCRIPTION	(7) USABLE ON CODE	(8) QTY INC IN UNIT
10	1	XBFZZ		48476	53239	HEAD ASSEMBLY	EA	1
10	2	XBFZZ	5306-00-405-0881	990	53239	BOLT, MACHINE HEAD MTG	EA	2
10	3	XBFZZ	5306-01-009-6939	995	53239	SCREW, CAP, HEXAGON HEAD TO CYLINDER	EA	7
10	4	PAFZZ	5330-01-022-5501	43204	53239	GASKET CYLINDER HEAD	EA	1
10	5	XBFZZ		48126	53239	CYLINDER	EA	1
10	6	XBFZZ	5305-01-023-1901	34090	53239	SCREW, CAP, HEXAGON CYLINDER TO CRANKCASE	EA	6
10	7	XBOZZ	4710-00-506-1101	38487	53239	INTERCOOLER	EA	1
10	8	PAFZZ	5230-00-213-1641	31772	53239	GASKET CYLINDER TO CRANKCASE	EA	1
10	9	XBFZZ	4310-00-446-8990	31767	53239	PLATE, OIL RING	EA	1
10	10	PAOZZ	4730-00-278-4741	8011-4PX5-16T	72216	ELBOW, TUBING BREATHER	EA	2
10	11	PBOZZ	4710-01-253-8770	48493	80439	TUBE, BREATHER	EA	1
10	12	PBOZZ	4720-01-224-6662	39838	53239	AFTERCOOLER	EA	1

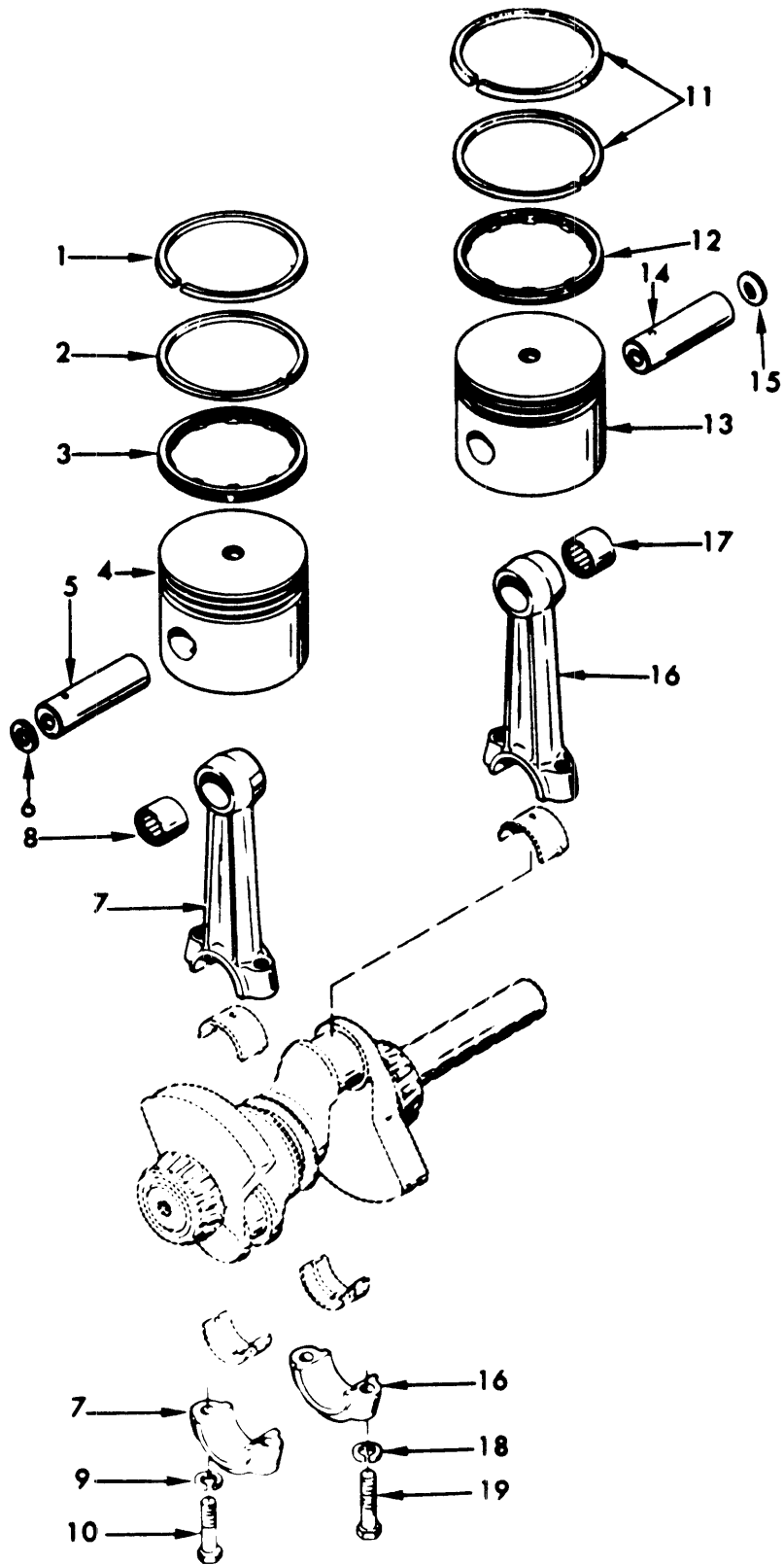
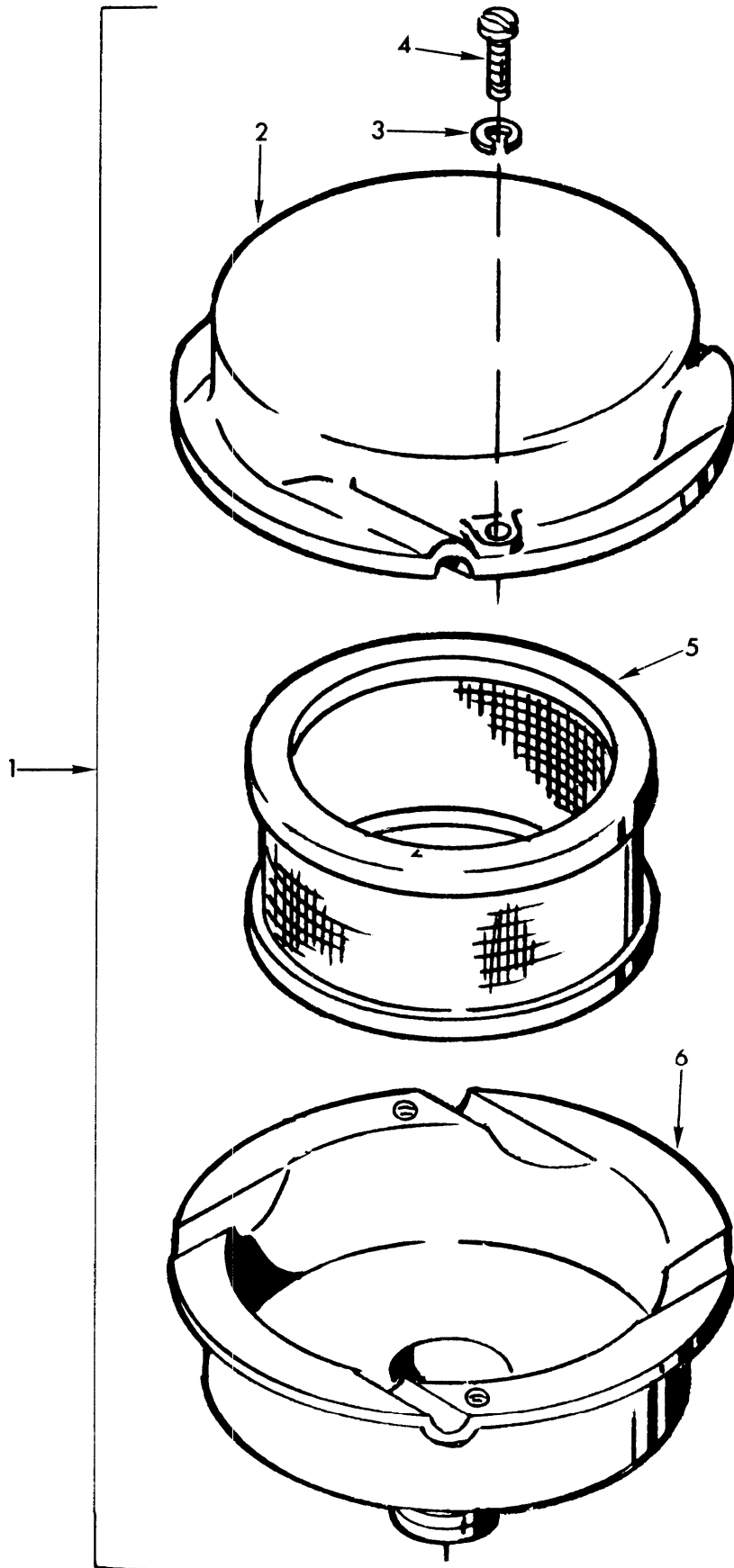


Figure 11. Piston and Rod

TS 4310-276-24P/11

SECTION II

(1) ILLUSTRATION (A) FIG NO	(2) (B) ITEM NO	(3) SMR CODE	(4) FEDERAL STOCK NUMBER	(5) PART NUMBER	(6) DESCRIPTION FSCM	(7) USABLE ON CODE U/M	(8) QTY INC IN UNIT
11		PAFZZ	4310-00-777-6946	43419	53239 RING SET LOW PRESSURE PISTON	EA	1
11	1				RING, COMPRESSION	EA	1
11	2				RING, COMPRESSION	EA	1
11	3				RING, OIL	EA	1
11	1	XFOZZ		48207	53239 .RING, COMPRESSION LOW PRESSURE TOP PART OF KIT P/N 43419	EA	1
11	2	XFOZZ		48208	53239 .RING, COMPRESSION LOW PRESSURE BOTTOM PART OF KIT P/N 43419	EA	1
11	3	XFOZZ		48209	53239 .RING, OIL LOW PRESSURE PISTON PART OF KIT P/N 43419	EA	1
11		PAFZZ	4310-00-777-6944	48418	53239 PISTON ASSEMBLY LOW PRESSURE	EA	1
11	4	XAOZZ		48124	53239 .PISTON LOW PRESSURE	EA	1
11	5	XAOZZ		48202	53239 .PIN, WRIST LOW PRESSURE	EA	1
11	6	XBZZ	5310-00-641-8377	7890	53239 .WASHER, FLAT LOW PRESSURE	EA	2
11	7	PAFZZ	4310-00-374-9521	31769	53239 CONNECTING ROD, PIST LOW PRESSURE	EA	1
11	8	XAOZZ		10161	53239 .BUSHING, WRIST PIN	EA	1
11	9	XAOZZ		9522	53239 .WASHER, LOCK ROD ASSY	EA	2
11	10	XAOZZ		32736	53239 .SCREW, CAP, HEXAGON ROD ASSY	EA	2
11		PAFZZ	4310-00-777-6945	48417	53239 RING SET LOW PRESSURE	EA	1
11	11				RING, COMPRESSION	EA	2
11	12				RING, OIL	EA	1
11	11	XFOZZ		48205	53239 .RING, COMPRESSION HIGH PRESSURE PISTON PART OF KIT P/N 48417	EA	2
11	12	XFOZZ		48206	53239 .RING, OIL HIGH PRESSURE PISTON PART OF KIT P/N 48417	EA	1
11		PAFZZ	4310-00-777-6942	48416	53239 .PISTON ASSEMBLY HIGH PRESSURE	EA	1
11	13	XAOZZ		48125	53239 .PISTON HIGH PRESSURE	EA	1
11	14	XAOZZ		48203	53239 .PIN, WRIST HIGH PRESSURE PISTON	EA	1
11	15	XBZZ	5310-00-641-8377	7890	53239 .WASHER, FLAT HIGH PRESSURE PISTON	EA	2
11	16	PAFZZ	4310-00-781-4789	48199	53239 ROD ASSEMBLY HIGH PRESSURE	EA	1
11	17	XAOZZ		48201	53239 .BUSHING WRIST PIN	EA	1
11	18	XAOZZ		9522	53239 .WASHER, LOCK ROD ASSEMBLY	EA	2
11	19	XAOZZ		32736	53239 .SCREW, CAP, HEXAGON ROD MTG	EA	2



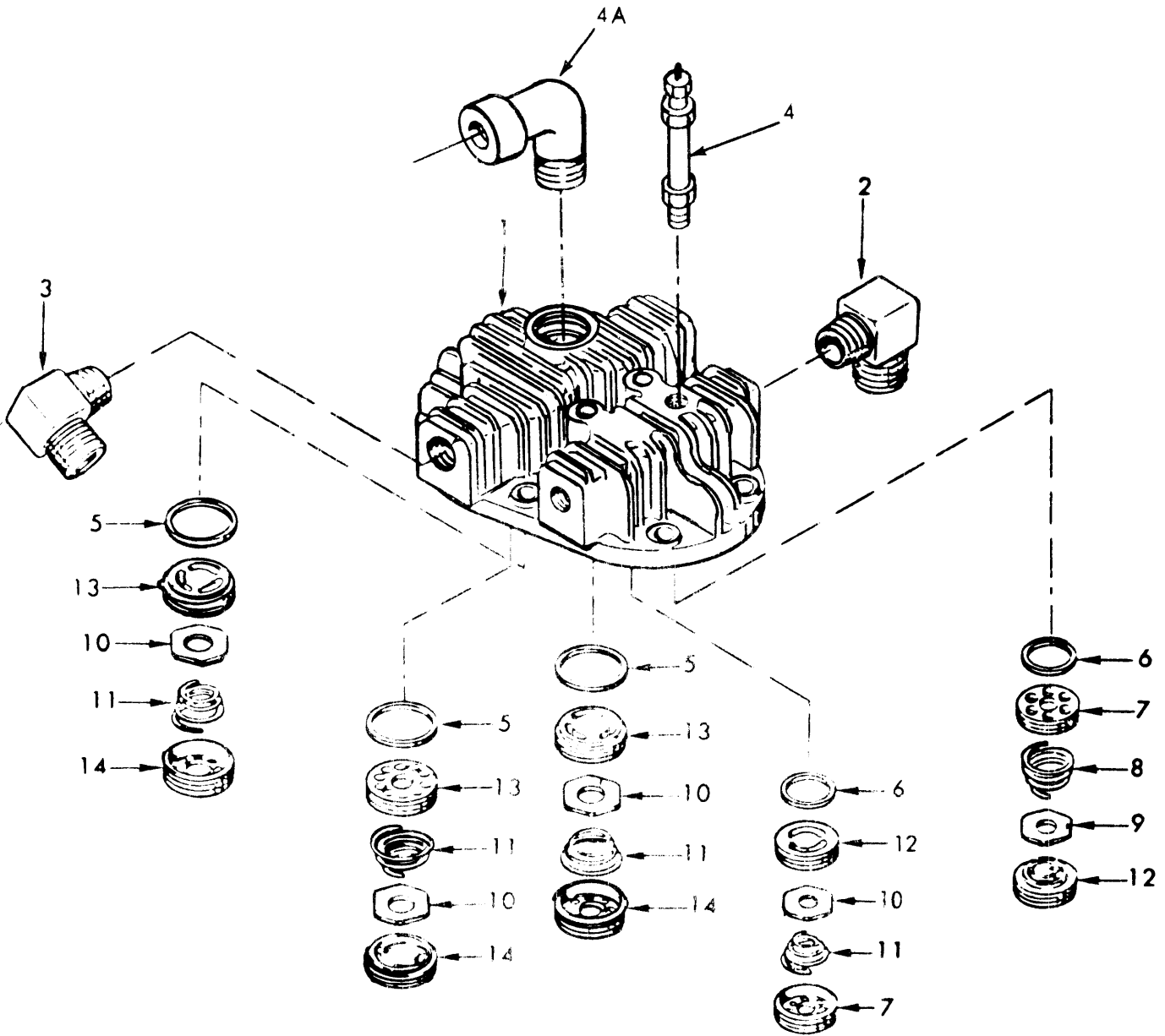
TS 4310-276-24P/12

Figure 12. Air Intake Filter Assembly



SECTION II

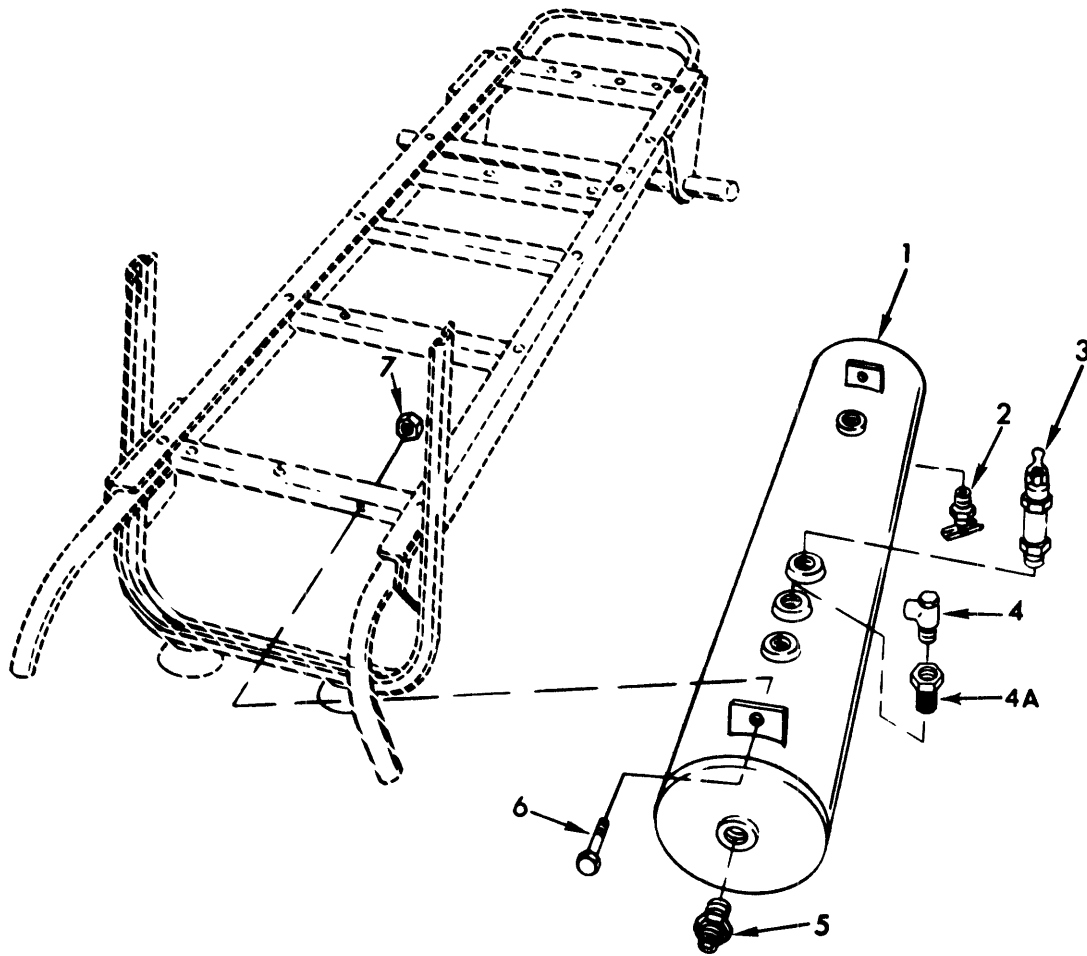
(1)	(2)	(3)	(4)	(5)	(6)	(7)	(8)	
ILLUSTRATION							QTY	
(A)	(B)	FEDERAL			DESCRIPTION		INC	
FIG	ITEM	SMR	STOCK	PART			IN	
NO	NO	CODE	NUMBER	NUMBER	FSCM	USABLE ON CODE	U/M	UNIT
12	1	PAOZZ	2940-00-521-8488	AI613-1	18170	CLEANER,AIR	EA	1
12	2	XZOZZ		72-487	18170	.COVER,AIR CLEANER	EA	1
12	3	PAOZZ	5310-00-045-3296	MS35338-43	96906	.WASHER,LOCK COVER	EA	2
12	4	PAOZZ	5305-00-993-1849	MS35207-259	96906	.SCREW,MACHINE	EA	2
12	5	PAOZZ	4310-00-960-2739	29-292-K90	18170	.FILTER,ELEMENT	EA	1
12	6	XAOZZ		72-488	18170	.BASE,AIR CLEANER	EA	1



TS 4310-276-24P/13

Figure 13. Cylinder Head, Intake and Discharge Valves

(1) ILLUSTRATION (A) FIG NO	(2) (B) ITEM NO	(3) SMR CODE	(4) FEDERAL STOCK NUMBER	(5) PART NUMBER	(6) FSCM	(6) DESCRIPTION	(7) USABLE ON CODE	(8) QTY INC IN UNIT
13	1	XBFZZ		48351	53239	CYLINDER HEAD	EA	1
13	2	XBOZZ	4730-00-254-6228	553-3-8PX3-8T	77216	ELBOW,TUBING AFTERCOOLER	EA	1
13	3	PAOZZ	4730-00-921-3245	555-5-8TX1-2P	72216	ELBOW,TUBING INTERCOOLER	EA	2
13	4	PAOZZ	4820-00-293-3662	125-1-4-60PSI	75336	VALVE,SAFETY INTERCOOLER	EA	1
13	4A	PAOZZ	4730-00-203-0030	454112	21450	ELBOW STREET 90@-3/4 "NPT",AIR CLEANER MTG	EA	1
13	5	PAOZZ	5365-00-038-2218	12548	53239	SHIM,VALVE	EA	3
13	6	PAFZZ	5365-00-431-1655	12549	53239	SHIM,VALVE	EA	2
13	7	XBFZZ	4310-01-045-7791	12524	53239	RETAINER,VALVE	EA	2
13		PAFZZ	4310-00-994-4187	18868	53239	VALVE AND SPRING	EA	1
13	8					SPRING,VALVE	EA	1
13	10					VALVE	EA	4
13	11					SPRING,VALVE	EA	4
13	8	XFPZZ		7891	53239	.SPRING,VALVE PART OF KIT P/N 18868	EA	1
13	9	XFPZZ		12525	53239	.VALVE	EA	1
13	10	XFPZZ		12527	53239	.VALVE PART OF KIT P/N 18868	EA	4
13	11	XFPZZ		12590	53239	.SPRING,VALVE PART OF KIT P/N 18868	EA	4
13	12	XBFZZ	4310-00-863-1650	12526	53239	SEAT,VALVE	EA	2
13	13	PAFZZ	4310-00-863-4806	12529	53239	SEAT,VALVE	EA	3
13	14	XBFZZ	4310-00-431-1652	12528	53239	RETAINER,VALVE	EA	3



TS 4310-276-24P/14

Figure 14. Air Receiver Tank Assembly, Relief and Safety Valves

SECTION II

(1) ILLUSTRATION (A) FIG NO	(2) (B) ITEM NO	(3) SMR CODE	(4) FEDERAL STOCK NUMBER	(5) PART NUMBER	(6) FSCM	(6) DESCRIPTION	(7) USABLE ON CODE	(8) QTY INC IN UNIT
14	1	XBOZZ		43312	53239	AIR RRECEIVER	EA	1
14	2	PAOZZ	4820-00-752-9040	MS35782-4	96906	VALVE,DRAIN AIR RECEIVER TANK 1/8" PIPE THREAD	EA	1
14	3	PAOZZ	4820-00-477-7958	112C1-4200	75336	VALVE ASSEMBLY SAFETY AND RELEASE	EA	1
14		XBOZZ		103T407	75336	.LEVER,RELEASE VALVE	EA	V
14		XBOZZ		48498	75336	.PIN,RELEASE VALVE,LEVER	EA	1
14	4	PAOZZ	4820-00-888-9302	125 1/4 175	75336	VALVE UNLOADER	EA	1
	4A	PAOZZ	4730-00-200-0257	3206X4	79470	REDUCER, 3/8X1/4	EA	1
14	5	XBOZZ		48X6X8	79470	ADAPTER HOSE 3/8 FLANGEOTUBE MALEX1/2PIPE MALE	EA	2
14	6	PAOZZ	5305-01-022-7990	9102	53239	SCREW,CAP,HEXAGON RECEIVER MTG	EA	2
14	7	PAOZZ	5310-00-207-9053	414908PC40	10001	NUT,SELF-LOCKING AIR RECEIVER TANK MTG	EA	2

STOCK NUMBER	FIGURE NO	ITEM NO	STOCK NUMBER	FIGURE NO	ITEM NO
5315-00-013-7185	5	13	5310-00-641-8377	11	6
2910-00-025-6407	3	6	5310-00-641-8377	11	15
5365-00-038-2218	13	5	4310-00-689-5711	9	
5310-00-045-3296	12	3	2910-00-705-7814	2	6
2610-00-050-9560	5	15	2910-00-711-0395	2	5
2610-00-051-9114	5	14	5310-00-732-0558	5	1
5305-00-068-0502	1	8	4820-00-752-9040	14	2
5305-00-068-0502	2	3	5310-00-761-6882	6	8
2805-00-068-7510	1	5	5310-00-768-0318	9	10
5305-00-071-1773	9	8	4310-00-777-6942	11	
2910-00-099-5639	3	2	4310-00-777-6944	11	
3110-00-100-0515	9	12	4310-00-777-6945	11	
3110-00-100-3139	9	19	4310-00-777-6946	11	
4730-00-200-0257	14	4A	4310-00-781-4789	11	16
4730-00-203-0030	13	4A	4730-00-788-0441	1	14
4910-00-204-2644	7	3	4310-00-863-1650	13	12
5310-00-207-9053	14	7	4310-00-863-4806	13	13
5330-00-213-1641	10	8	4820-00-888-9302	14	4
3030-00-251-3941	9	6	2910-00-905-9792	3	1
4730-00-254-6228	13	2	4730-00-921-3245	13	3
5305-00-269-3214	1	13	5310-00-953-8628	1	11
4710-00-277-5525	2		6685-00-960-2783	8	1
4730-00-277-7621	8	4	6685-00-960-2783	8	1
4730-00-278-4741	10	10	4310-00-960-2739	12	5
4730-00-287-1766	2	10	5330-00-961-9528	2	8
4730-00-287-1766	2	12	5305-00-993-1849	12	4
4730-00-288-8572	2	9	4310-00-994-4187	13	
4720-00-289-4612	7	1	5315-01-009-6932	9	16
5330-00-292-1622	9	18	5306-01-009-6939	10	3
4820-00-293-3662	13	4	5310-01-021-4246	9	5
5330-00-307-7975	8	3	5310-01-021-4248	1	9
4310-00-319-0481	9	13	5310-01-021-4249	5	11
5330-00-374-9517	9	22	5310-01-021-4279	1	10
5330-00-374-9518	9	21	5305-01-022-0037	6	12
4310-00-374-9521	11	7	5305-01-022-0039	6	4
5306-00-405-0881	10	2	5310-01-022-2996	9	9
3120-00-423-0356	5	7	5310-01-022-2997	9	4
4310-00-431-1652	13	14	4310-01-022-4007	9	17
5365-00-431-1655	13	6	5330-01-022-5501	10	4
3920-00-431-8653	6	6	5305-01-022-5555	7	5
3920-00-431-8653	6	15	5305-01-022-7980	7	
4310-00-446-8990	10	9	5305-01-022-7990	14	6
4310-00-446-8995	9	20	5306-01-023-1856	5	8
4820-00-477-7958	14	3	5305-01-023-1882	6	11
4730-00-489-8225	8	2	5305-01-023-1883	6	6
4710-00-506-1101	10	7	5305-01-023-1901	9	24
2940-00-521-8488	12	1	5305-01-023-1901	10	6
2940-00-521-8488	12	2	5305-01-023-1902	1	3
2940-00-521-8488	12	6	5305-01-023-1902	9	1
5310-00-550-1130	1	6	5305-01-023-1902	9	3
4730-00-580-7408	7	2	2910-01-038-6050	2	4
4730-00-585-7639	9	15	4310-01-045-7791	13	7
5330-00-594-2293	3	5	4720-01-224-6662	10	12
			4710-01-253-8770	10	11
			3020-01-162-5203	1	1
			3020-01-169-5313	9	2

TMS-4310-276-24P  
SECTION IV. NATIONAL STOCK NUMBER AND REFERENCE NUMBER INDEX

PART NUMBER	FSCM	FIG NO	ITEM NO	PART NUMBER	FSCM	FIG NO	ITEM NO
AI613-1	18170	12	1	32736	53239	11	19
ASTMB75	81346	2		34090	53239	9	24
A1560	11431	5		34090	53239	10	6
A21951	86823	2	6	35755	53239	9	17
CP30-1-11-13A	25500	2	13	38227	53239	9	23
FS15451-6	18170	12	1	38230	53239	9	11
H-3/4	71176	1	2	38487	53239	10	7
LP43	66289	3	2	39838	53239	10	12
MODEL1A08-3	97403	1	5	4L580-2	71176	9	5
MS35207-259	96906	12	4	414908P040	10001	14	7
MS35333-40	96906	1	6	4201	11431	5	4
MS35338-43	96906	12	3	4219	11431	5	12
MS35389-1	96906	5	15	43204	53239	10	4
MS35392-48	96906	5	14	43309	53239	9	7
MS35756-34	96906	1	4	43312	53239	14	1
MS35782-4	96906	14	2	43313	86823	2	4
MS39171-13	96906	2	10	43318	53239	2	1
MS39171-13	96906	2	12	43319	53239	2	2
MS45904-77	96906	1	11	43320	53239	7	1
MS51086-1	96906	3	1	43419	53239	11	
MS51091-4	96906	3	5	43529	53239	2	6
MS51967-8	96906	5	1	43530	86823	2	7
MS51967-14	96906	9	10	43531	53239	2	8
MS90725-6	96906	1	8	454112	21450	13	4A
MS90725-6	96906	2	3	48X6X8	53239	7	2
MS90725-64	96906	1	13	48X6X8	53239	14	5
MS90725-120	96906	9	8	48124	53239	11	4
T-17-4	86823	2	5	48125	53239	11	13
1000-2	90677	8	1	48126	53239	10	5
10161	53239	11	8	48199	53239	11	16
103T407	75336	14		48201	53239	11	17
1032	53239	1	10	48202	53239	11	5
112C1-4-200	75336	14	3	48203	53239	11	14
11713	53239	7		48205	53239	11	11
125 1/4 175	75336	14	4	48206	53239	11	12
125-1-4-60PSI	75336	13	4	48207	53239	11	1
12524	53239	13	7	48208	53239	11	2
12525	53239	13	9	48209	53239	11	3
12526	53239	13	12	48351	53239	13	1
12527	53239	13	10	48355	53239	1	7
12528	53239	13	14	48409	53239	1	12
12529	53239	13	13	48412	53237	9	
12548	53239	13	5	48416	53239	11	
12549	53239	13	6	48417	53239	11	
12590	53239	13	11	48418	53239	11	
12687	53239	9	18	48472	53239	7	4
13517	53239	9	14	48475	53239	8	3
13523	53239	9	13	48476	53239	10	1
137185	0000	5	13	48477	53239	9	2
14117A	60038	9	19	48493	80439	10	11
14274	60038	9	12	48498	75336	14	
1522092	70040	3	6	48529	53239	2	11
15781	53239	7	5	553-3-8PX3-8T	77216	13	2
18858	53239	13		555-5-8TX1-2P	72216	13	3
2AK32H	71176	1	1	559	11431	5	7
269X4X4	72216	8	4	6172-1506	94894	7	3
270X4X4	72216	8	2	6460	11431	5	3
29-292-K90	18170	12	5	6461	11431	5	2
306	11431	5	8	72-487	18170	12	2
31762	53239	9	20	72-488	18170	12	6
31764	53239	9	22	7890	53239	11	6
31765	53239	9	21	7890	53239	11	15
31767	53239	10	9	7891	53239	13	8
31769	53239	11	7	8011-4PX5-16T	72216	10	10
31772	53239	10	8	841	11431	5	9
3206X4	79470	14	4A	854187	80463	3	4
322013-19	83205	6	9	854254	70040	3	7
323277	83205	6		9102	53239	14	6
323277-1	83205	6	2	9152	53239	1	9
323277-11	83205	6	14	9156	53239	9	5
323277-13	83205	6	3	919	11431	5	5
323277-14	83205	6	6	919	11431	5	6
323277-16	83205	6	8	9283	53239	9	9
323277-19	83205	6	16	9322	53239	9	4
323277-2	83205	6	5	9327	53239	7	
323277-20	83205	6	12	9348	53239	2	9
323277-21	83205	6	10	9390	53239	9	16
323277-21	83205	6	11	9522	53239	11	9
323277-22	83205	6	4	9522	53239	11	18
323277-3	83205	6	1	9527	53239	1	
323277-4	83205	6	4	954	11431	5	10
323277-6	83205	6	15	955	11431	5	11
323277-6	83205	6	15	9786E88	97403	1	14
323277-8	83205	4	1	980	53239	1	3
323277-8	83205	6	13	980	53239	9	1
323277-9	83205	6	7	980	53239	9	3
32736	53239	11	10	990	53239	10	2
				995	53239	10	3





**By Order of the Secretary of the Army:**

**E. C. MEYER**  
*General, United States Army*  
*Chief of Staff*

**Official:**

**J. C. PENNINGTON**  
*Major General, United States Army*  
*The Adjutant General*

**DISTRIBUTION:**

To be distributed in accordance with DA Form 12-25A Organizational Maintenance Requirements for Air Compressors, 5 CFM.





# SOMETHING WRONG WITH THIS MANUAL?

THEN... JOT DOWN THE DOPE ABOUT IT ON THIS FORM. TEAR IT OUT, FOLD IT AND DROP IT IN THE MAIL!

FROM: (YOUR UNIT'S COMPLETE ADDRESS)

PFC JOHN DOE  
COA, 3<sup>d</sup> ENGINEER BN  
FT. LEONARD WOOD MO 63108

DATE

PUBLICATION NUMBER

TM 5-4310-276-24P

DATE

26 Jul 79

TITLE

Compressor, Reciprocating: Air  
Hand Truck Mounted, Gasoline Engine

BE EXACT... PIN-POINT WHERE IT IS

IN THIS SPACE TELL WHAT IS WRONG AND WHAT SHOULD BE DONE ABOUT IT:

PAGE NO.	PARA-GRAPH	FIGURE NO.	TABLE NO.	
6	2-1 a			In line 6 of paragraph 2-1a the manual states the engine has <u>6</u> cylinders. The engine on my set only has <u>4</u> cylinders. Change the manual to show <u>4</u> cylinders.
81		4-3		Callout 16 on figure 4-3 is pointing at a <u>bolt</u> . In the key to fig. 4-3, item 16 is called a <u>skim</u> . Please correct one or the other.
125	line 20			Ordered a gasket, item 19 on figure B-16 by NSN 2910-00-762-3001. I got a gasket but it doesn't fit. Supply says I got what I ordered, so the NSN is wrong. Please give me a good NSN.

TEAR ALONG DOTTED LINE

SAMPLE

TYPED NAME, GRADE OR TITLE, AND TELEPHONE NUMBER

JOHN DOE, PFC (268) 317-7111

SIGN HERE:

*John Doe*

DA FORM 2028-2 (TEST) 1 AUG 74

P.S.--IF YOUR OUTFIT WANTS TO KNOW ABOUT YOUR MANUAL "FIND," MAKE A CARBON COPY OF THIS AND GIVE IT TO YOUR HEADQUARTERS. DRSTS-M Overprint 1, 1 Nov 78

FILL IN YOUR  
UNIT'S ADDRESS

FOLD BACK

DEPARTMENT OF THE ARMY

OFFICIAL BUSINESS

PENALTY FOR PRIVATE USE, \$300

Commander  
US Army Troop Support and Aviation  
Materiel Readiness Command  
ATTN: DRSTS-MTPS  
4300 Goodfellow Boulevard  
St. Louis, MO 63120

TEAR ALONG DOTTED LINE

FOLD BACK



# SOMETHING WRONG WITH THIS MANUAL?

THEN...JOT DOWN THE DOPE ABOUT IT ON THIS FORM, TEAR IT OUT, FOLD IT AND DROP IT IN THE MAIL!

FROM: (YOUR UNIT'S COMPLETE ADDRESS)

DATE

PUBLICATION NUMBER

TM 5-4310-276-24P

DATE

26 Jul 79

TITLE

Compressor, Reciprocating: Air Hand  
Truck Mounted, Gasoline Engine Drive

BE EXACT...PIN-POINT WHERE IT IS

IN THIS SPACE TELL WHAT IS WRONG AND WHAT SHOULD BE DONE ABOUT IT:

PAGE NO.	PARA-GRAPH	FIGURE NO.	TABLE NO.
----------	------------	------------	-----------

TEAR ALONG DOTTED LINE

TYPED NAME, GRADE OR TITLE, AND TELEPHONE NUMBER

SIGN HERE:

FILL IN YOUR  
UNIT'S ADDRESS

FOLD BACK

DEPARTMENT OF THE ARMY

OFFICIAL BUSINESS

PENALTY FOR PRIVATE USE, \$300

Commander:  
U.S. Army Support and Aviation  
Material Readiness Command  
ATTN: DRSTS-MTPS  
4300 Goodfellow Boulevard  
St. Louis, Mo. 63120

TEAR ALONG DOTTED LINE

FOLD BACK



FILL IN YOUR  
UNIT'S ADDRESS

FOLD BACK

DEPARTMENT OF THE ARMY

OFFICIAL BUSINESS

PENALTY FOR PRIVATE USE, \$300

Commander:  
U.S. Army Support and Aviation  
Material Readiness Command  
ATTN: DRSTS-MTPS  
4300 Goodfellow Boulevard  
St. Louis, Mo. 63120

TEAR ALONG UNIT IDU LINE

FOLD BACK





FILL IN YOUR  
UNIT'S ADDRESS

FOLD BACK

DEPARTMENT OF THE ARMY

OFFICIAL BUSINESS

PENALTY FOR PRIVATE USE, \$300

Commander:  
U.S. Army Support and Aviation  
Material Readiness Command  
ATTN: DRSTS-MTPS  
4300 Goodfellow Boulevard  
St. Louis, Mo. 63120

TEAR ALONG THIS LINE

FOLD BACK

# The Metric System and Equivalents

## Linear Measure

1 centimeter = 10 millimeters = .39 inch  
 1 decimeter = 10 centimeters = 3.94 inches  
 1 meter = 10 decimeters = 39.37 inches  
 1 dekameter = 10 meters = 32.8 feet  
 1 hectometer = 10 dekameters = 328.08 feet  
 1 kilometer = 10 hectometers = 3,280.8 feet

## Weights

1 centigram = 10 milligrams = .15 grain  
 1 decigram = 10 centigrams = 1.54 grains  
 1 gram = 10 decigrams = .035 ounce  
 1 dekagram = 10 grams = .35 ounce  
 1 hectogram = 10 dekagrams = 3.52 ounces  
 1 kilogram = 10 hectograms = 2.2 pounds  
 1 quintal = 100 kilograms = 220.46 pounds  
 1 metric ton = 10 quintals = 1.1 short tons

## Liquid Measure

1 centiliter = 10 milliliters = .34 fl. ounce  
 1 deciliter = 10 centiliters = 3.38 fl. ounces  
 1 liter = 10 deciliters = 38.82 fl. ounces  
 1 dekaliter = 10 liters = 2.64 gallons  
 1 hectoliter = 10 dekaliters = 26.42 gallons  
 1 kiloliter = 10 hectoliters = 264.18 gallons

## Square Measure

1 sq. centimeter = 100 sq. millimeters = .155 sq. inch  
 1 sq. decimeter = 100 sq. centimeters = 15.5 sq. inches  
 1 sq. meter (centare) = 100 sq. decimeters = 10.76 sq. feet  
 1 sq. dekameter (are) = 100 sq. meters = 1,076.4 sq. feet  
 1 sq. hectometer (hectare) = 100 sq. dekameters = 2.47 acres  
 1 sq. kilometer = 100 sq. hectometers = 386 sq. mile

## Cubic Measure

1 cu. centimeter = 1000 cu. millimeters = .06 cu. inch  
 1 cu. decimeter = 1000 cu. centimeters = 61.02 cu. inches  
 1 cu meter = 1000 cu. decimeters = 35.31 cu. feet

# Approximate Conversion Factors

To change	To	Multiply by	To change	To	Multiply by
inches	centimeters	2.540	ounce-inches	newton-meters	.007062
feet	meters	.305	centimeters	inches	.394
yards	meters	.914	meters	feet	3.280
miles	kilometers	1.609	meters	yards	1.094
square inches	square centimeters	6.451	kilometers	miles	.621
square feet	square meters	.093	square centimeters	square inches	.155
square yards	square meters	.836	square meters	square feet	10.764
square miles	square kilometers	2.590	square meters	square yards	1.196
acres	square hectometers	.405	square kilometers	square miles	.386
cubic feet	cubic meters	.028	square hectometers	acres	2.471
cubic yards	cubic meters	.765	cubic meters	cubic feet	35.315
fluid ounces	milliliters	29.573	cubic meters	cubic yards	1.308
pints	liters	.473	milliliters	fluid ounces	.034
quarts	liters	.946	liters	pints	2.113
gallons	liters	3.785	liters	quarts	1.057
ounces	grams	28.349	liters	gallons	.264
pounds	kilograms	.454	grams	ounces	.035
short tons	metric tons	.907	kilograms	pounds	2.205
pound-feet	newton-meters	1.365	metric tons	short tons	1.102
pound-inches	newton-meters	.11375			

# Temperature (Exact)

°F	Fahrenheit temperature	5/9 (after subtracting 32)	Celsius temperature	°C
----	------------------------	----------------------------	---------------------	----

